



Modern Education Society's

**Neville Wadia Institute of Management Studies & Research**

Permanently affiliated to Savitribai Phule Pune University, Accredited by NAAC

Approved by AICTE, recognized under 2 (f) & 12 (b) sections of UGC Act.

Email id : [director@nevillewadia.com](mailto:director@nevillewadia.com) Website : [www.nevillewadia.com](http://www.nevillewadia.com)

*Dr. A. B. Dadas, Director*

# EMPLOYER FEEDBACK ABOUT ACADEMIC PERFORMANCE, AMBIENCE AND CURRICULUM (2023-24)



19, Late Prin. V. K. Joag Path, Pune – 411001 Maharashtra, (India)  
Tel : 020-26163275, 26160788, 020-26169949 (Director)

  
**Director**  
Neville Wadia Institute of  
Management Studies & Research  
Pune-411 001.



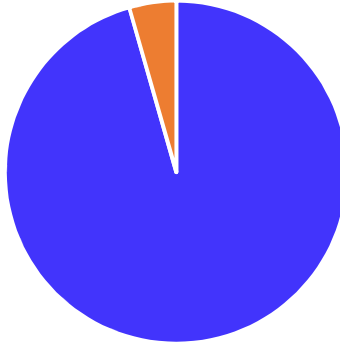
Modern Education Society's  
**Neville Wadia Institute of Management Studies & Research**

Permanently affiliated to Savitribai Phule Pune University, Accredited by NAAC  
Approved by AICTE, recognized under 2 (f) & 12 (b) sections of UGC Act.  
Email id : [director@nevillewadia.com](mailto:director@nevillewadia.com) Website : [www.nevillewadia.com](http://www.nevillewadia.com)

**Dr. A. B. Dadas, Director**

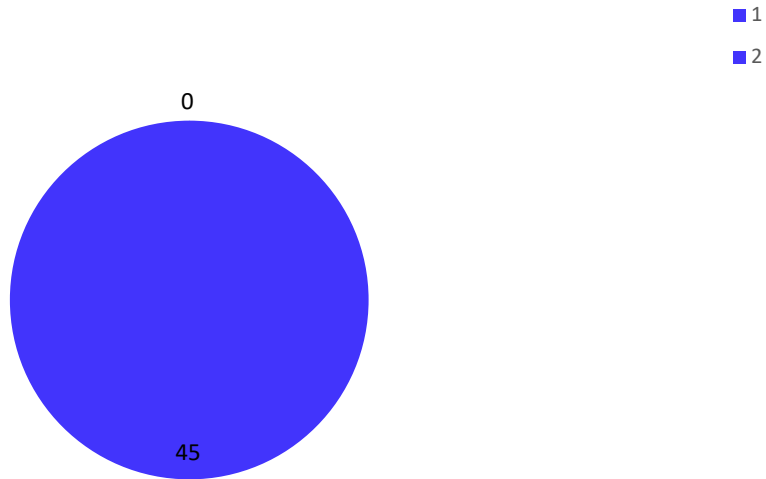
Did the institute provide Student centric teaching -learning process?

45 responses



Did the institute take special efforts to strengthen soft skills?

45 responses



19, Late Prin. V. K. Joag Path, Pune – 411001 Maharashtra, (India)  
Tel : 020-26163275, 26160788, 020-26169949 (Director)

  
**Director**  
Neville Wadia Institute of  
Management Studies & Research  
Pune-411 001.



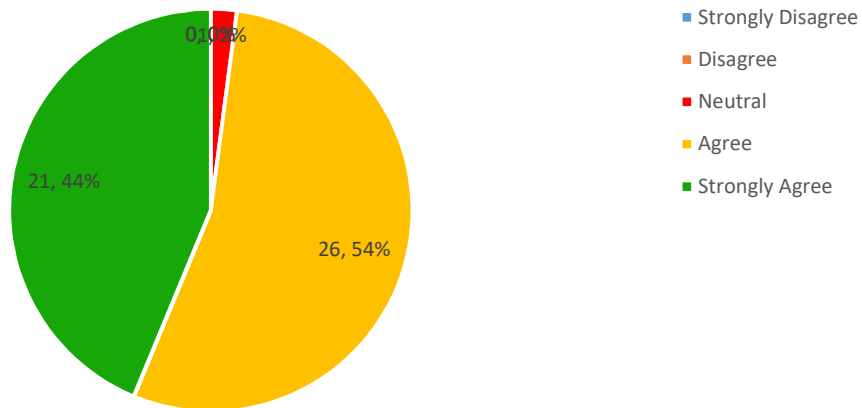
Modern Education Society's  
**Neville Wadia Institute of Management Studies & Research**

Permanently affiliated to Savitribai Phule Pune University, Accredited by NAAC  
Approved by AICTE, recognized under 2 (f) & 12 (b) sections of UGC Act.  
Email id : [director@nevillewadia.com](mailto:director@nevillewadia.com) Website : [www.nevillewadia.com](http://www.nevillewadia.com)

**Dr. A. B. Dadas, Director**

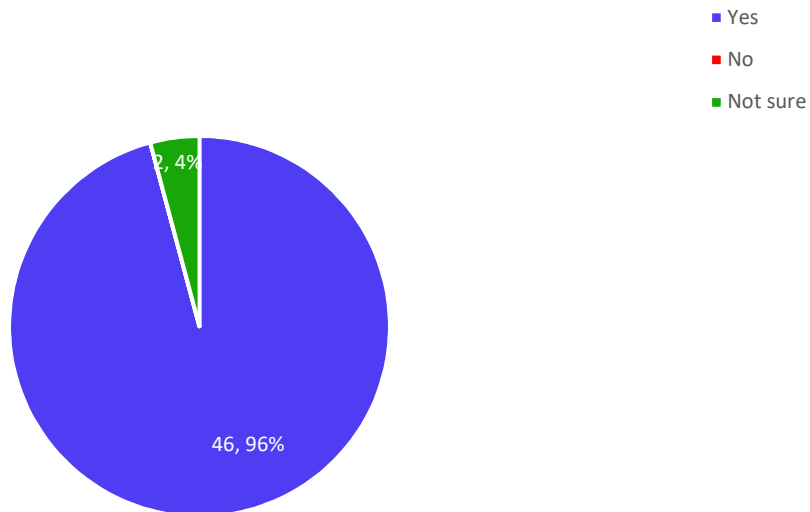
Student gained enough theoretical knowledge and practical skills to cope with the work environment.

45 responses



Curriculum inculcates professional ethics and life long learning.

45 responses



19, Late Prin. V. K. Joag Path, Pune – 411001 Maharashtra, (India)  
Tel : 020-26163275, 26160788, 020-26169949 (Director)

  
**Director**  
Neville Wadia Institute of  
Management Studies & Research  
Pune-411 001.



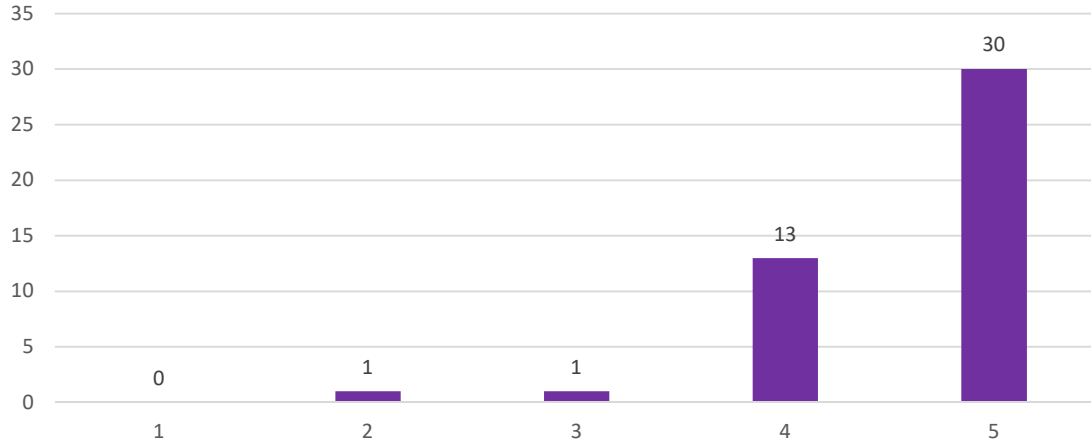
Modern Education Society's  
**Neville Wadia Institute of Management Studies & Research**

Permanently affiliated to Savitribai Phule Pune University, Accredited by NAAC  
Approved by AICTE, recognized under 2 (f) & 12 (b) sections of UGC Act.  
Email id : [director@nevillewadia.com](mailto:director@nevillewadia.com) Website : [www.nevillewadia.com](http://www.nevillewadia.com)

**Dr. A. B. Dadas, Director**

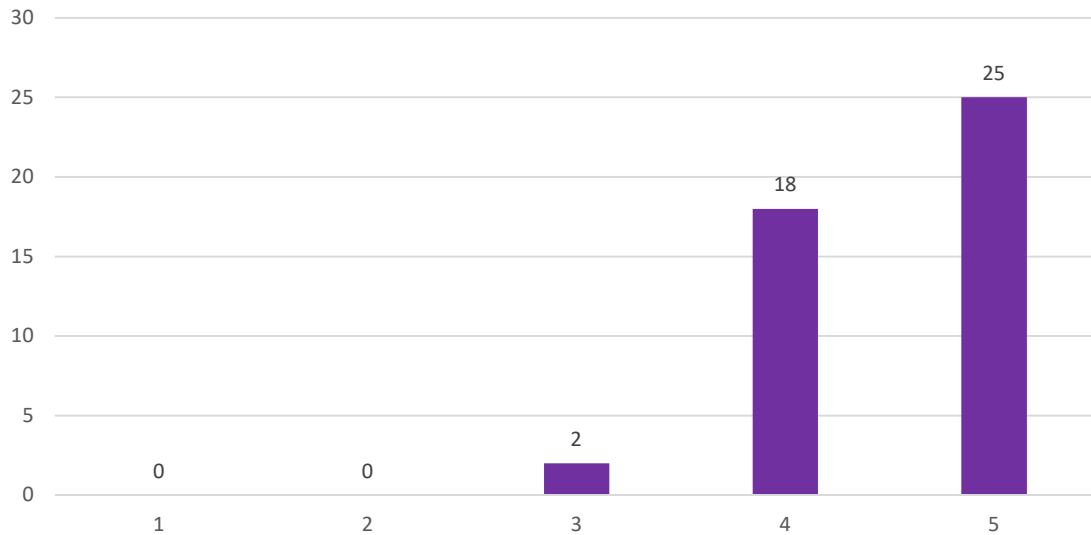
The students recruited have displayed eagerness to take responsibility of their tasks.

45 responses



The student hired by you are good team player.

45 responses



19, Late Prin. V. K. Joag Path, Pune – 411001 Maharashtra, (India)  
Tel : 020-26163275, 26160788, 020-26169949 (Director)

  
**Director**  
Neville Wadia Institute of  
Management Studies & Research  
Pune-411 001.



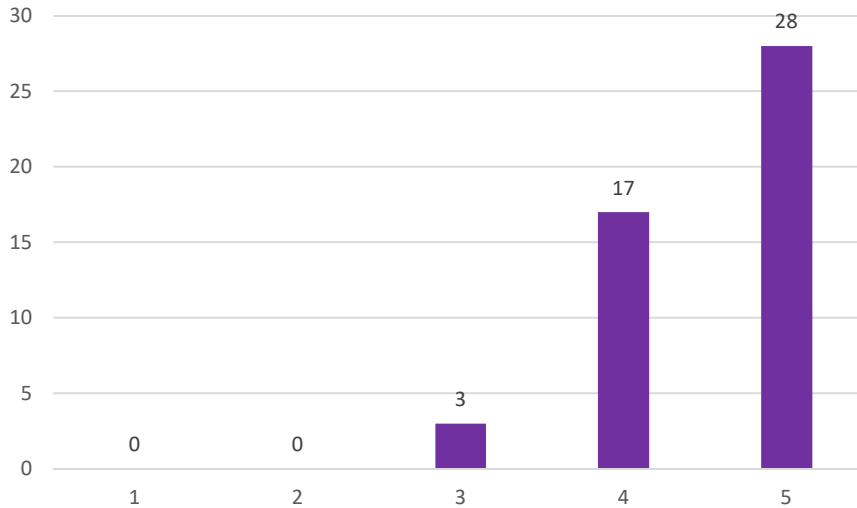
Modern Education Society's  
**Neville Wadia Institute of Management Studies & Research**

Permanently affiliated to Savitribai Phule Pune University, Accredited by NAAC  
Approved by AICTE, recognized under 2 (f) & 12 (b) sections of UGC Act.  
Email id : [director@nevillewadia.com](mailto:director@nevillewadia.com) Website : [www.nevillewadia.com](http://www.nevillewadia.com)

**Dr. A. B. Dadas, Director**

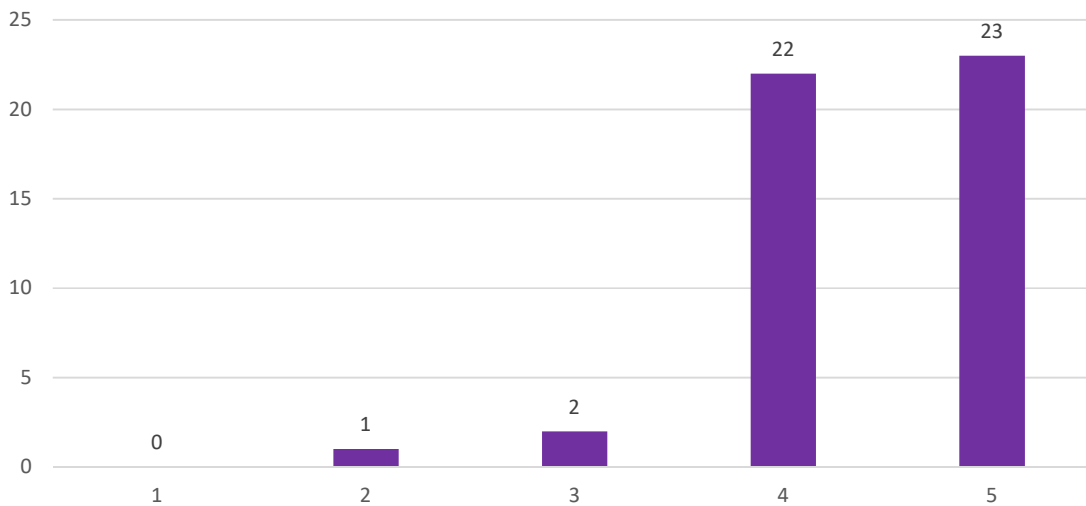
Student is open to learn new ideas and techniques.

45 responses



Students are recruited by you creative in response to workplace challenges.

45 responses



19, Late Prin. V. K. Joag Path, Pune – 411001 Maharashtra, (India)  
Tel : 020-26163275, 26160788, 020-26169949 (Director)

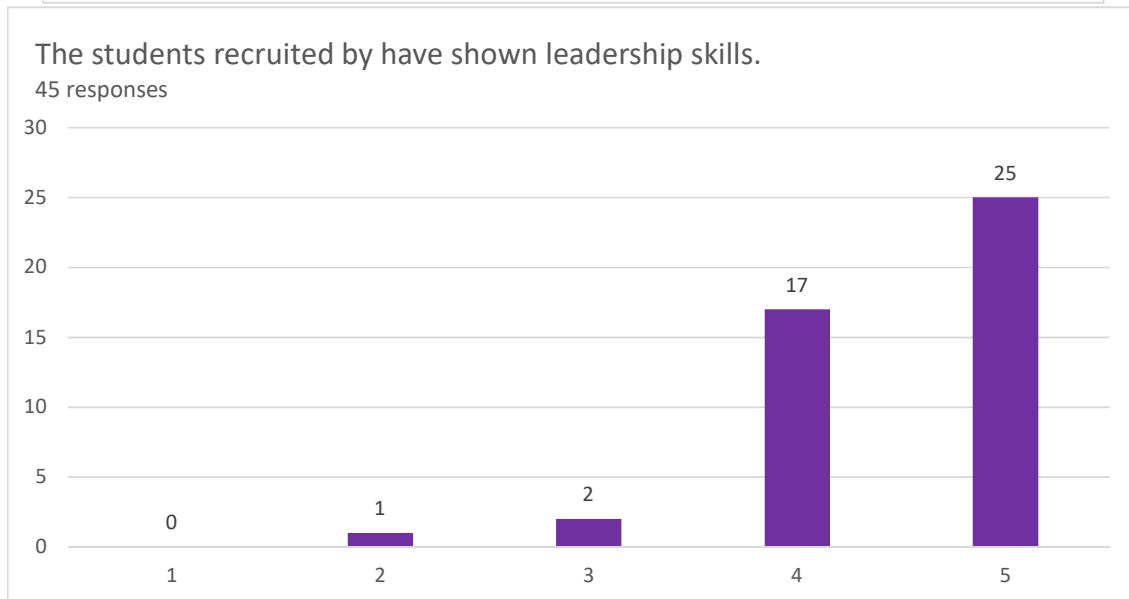
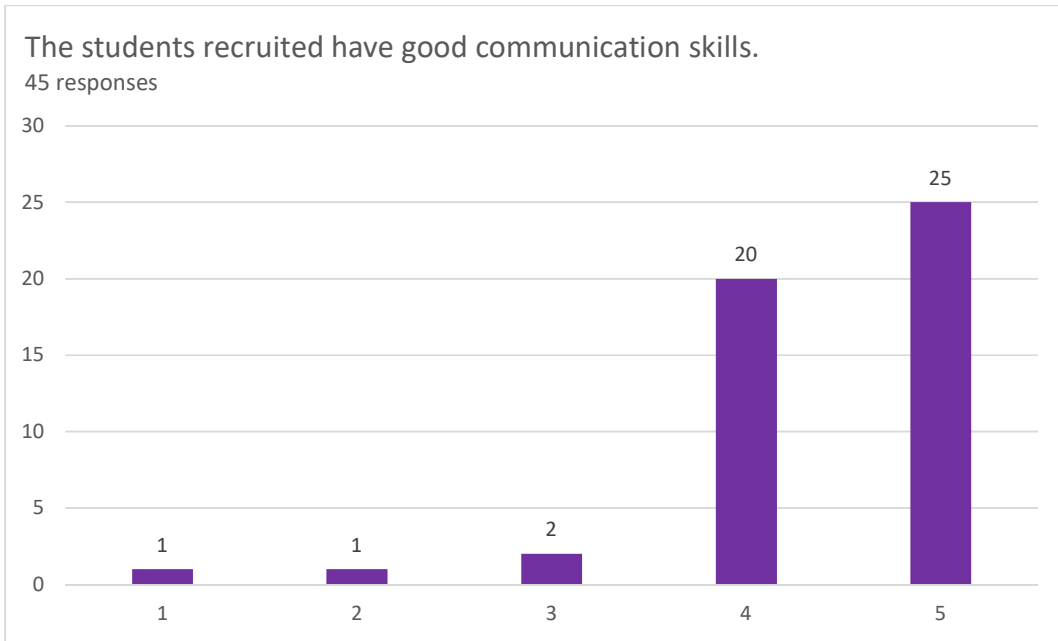
  
**Director**  
Neville Wadia Institute of  
Management Studies & Research  
Pune-411 001.



Modern Education Society's  
**Neville Wadia Institute of Management Studies & Research**

Permanently affiliated to Savitribai Phule Pune University, Accredited by NAAC  
Approved by AICTE, recognized under 2 (f) & 12 (b) sections of UGC Act.  
Email id : [director@nevillewadia.com](mailto:director@nevillewadia.com) Website : [www.nevillewadia.com](http://www.nevillewadia.com)

**Dr. A. B. Dadas, Director**



19, Late Prin. V. K. Joag Path, Pune – 411001 Maharashtra, (India)  
Tel : 020-26163275, 26160788, 020-26169949 (Director)

  
**Director**  
Neville Wadia Institute of  
Management Studies & Research  
Pune-411 001.



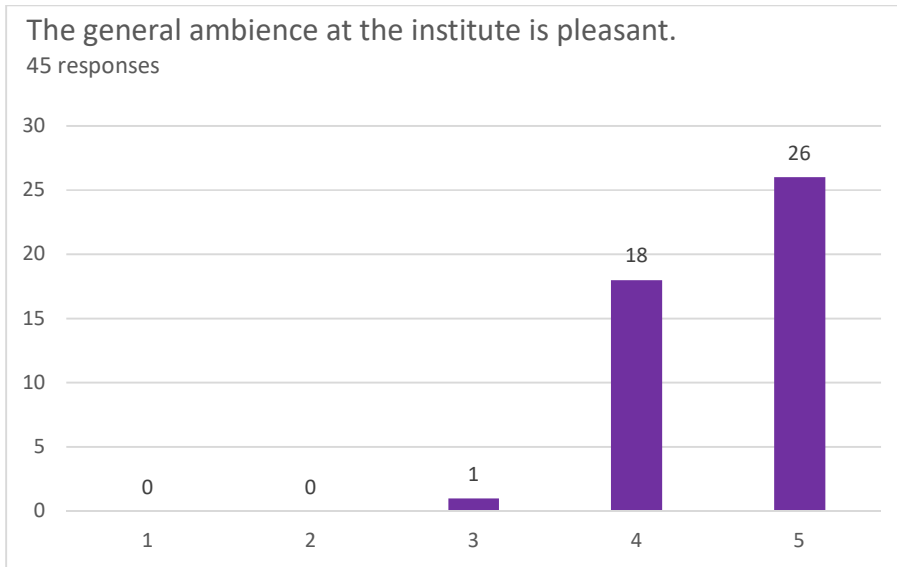
Modern Education Society's  
**Neville Wadia Institute of Management Studies & Research**

Permanently affiliated to Savitribai Phule Pune University, Accredited by NAAC

Approved by AICTE, recognized under 2 (f) & 12 (b) sections of UGC Act.

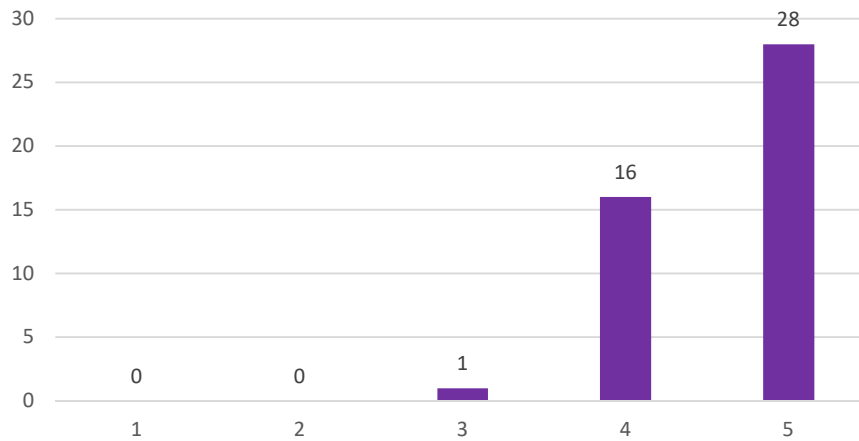
Email id : [director@nevillewadia.com](mailto:director@nevillewadia.com) Website : [www.nevillewadia.com](http://www.nevillewadia.com)

**Dr. A. B. Dadas, Director**



Cleanliness in the institution.

45 responses



19, Late Prin. V. K. Joag Path, Pune – 411001 Maharashtra, (India)  
Tel : 020-26163275, 26160788, 020-26169949 (Director)

  
**Director**  
Neville Wadia Institute of  
Management Studies & Research  
Pune-411 001.