



**Modern Education Society's**  
**Neville Wadia Institute of Management Studies & Research, Pune**  
(Permanently affiliated to Savitribai Phule Pune University, Accredited by NAAC  
Approved by AICTE, recognized under 2 (f) & 12 (b) sections of UGC Act)  
Email: [director@nevillewadia.com](mailto:director@nevillewadia.com), Website: [nwimsr.mespune.org](http://nwimsr.mespune.org)  
**Dr. A. B. Dadas, Director**

## **CRITERIA VI: GOVERNANCE, LEADERSHIP AND MANAGEMENT**

### **Key Indicator:6.5 INTERNAL QUALITY ASSURANCE SYSTEM**

**Metric No. 6.5.1 (QIM): Internal Quality Assurance Cell (IQAC) has contributed significantly for institutionalizing the quality assurance strategies and processes. It reviews teaching learning process, structures & methodologies of operations and learning outcomes at periodic intervals and records the incremental improvement in various activities**

#### **List of Supporting Documents as per SOP:**

<b>Metric No. 6.5.1 (QIM)</b>		
<b>Sr. No.</b>	<b>Title of Documents</b>	<b>Digital Page No./ Web link</b>
1	Main Response	2 - 8



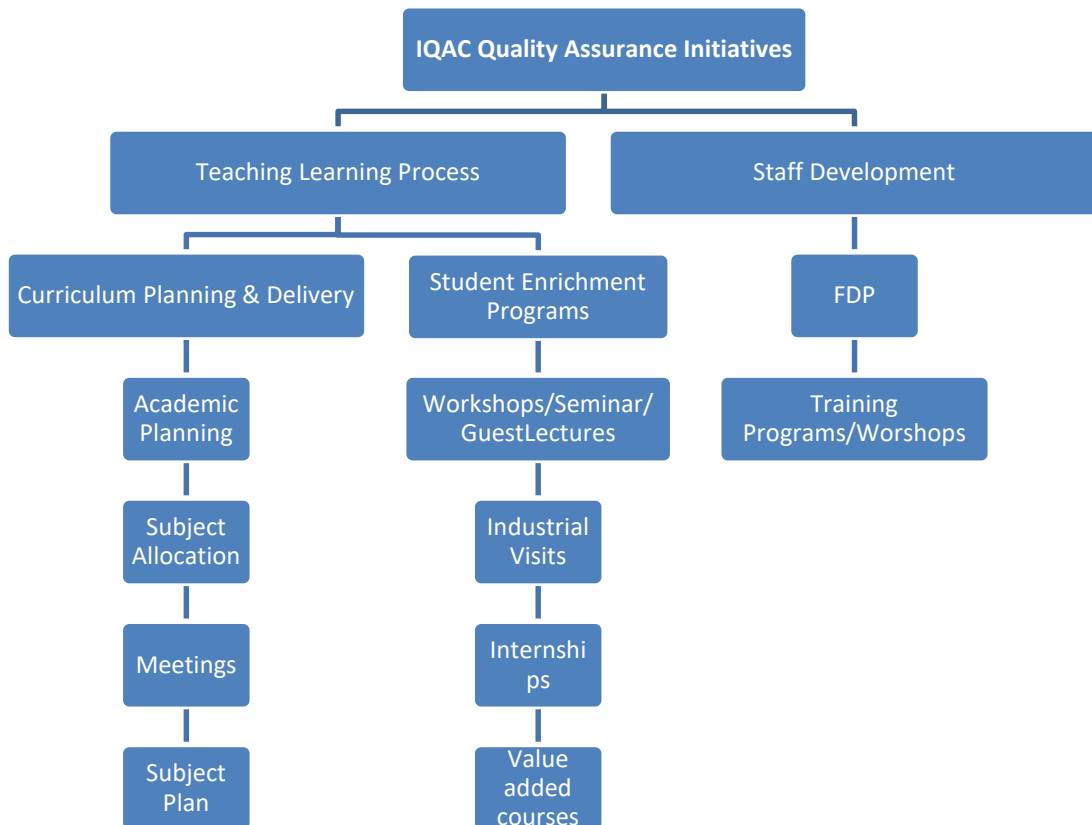


**Modern Education Society's**  
**Neville Wadia Institute of Management Studies & Research, Pune**  
(Permanently affiliated to Savitribai Phule Pune University, Accredited by NAAC  
Approved by AICTE, recognized under 2 (f) & 12 (b) sections of UGC Act)  
Email: [director@nevillewadia.com](mailto:director@nevillewadia.com), Website: [nwimsr.mespune.org](http://nwimsr.mespune.org)  
**Dr. A. B. Dadas, Director**

At Neville Wadia Institute of Management Studies and Research, the Internal Quality Assurance Cell (IQAC) is central to ensuring that the institution remains committed to its Vision of developing virtuous leaders and its Mission of continuously improving the caliber of graduates in a global setting. IQAC significantly contributes to institutionalizing quality assurance strategies and processes, thereby reinforcing our institution's dedication to excellence in management education.

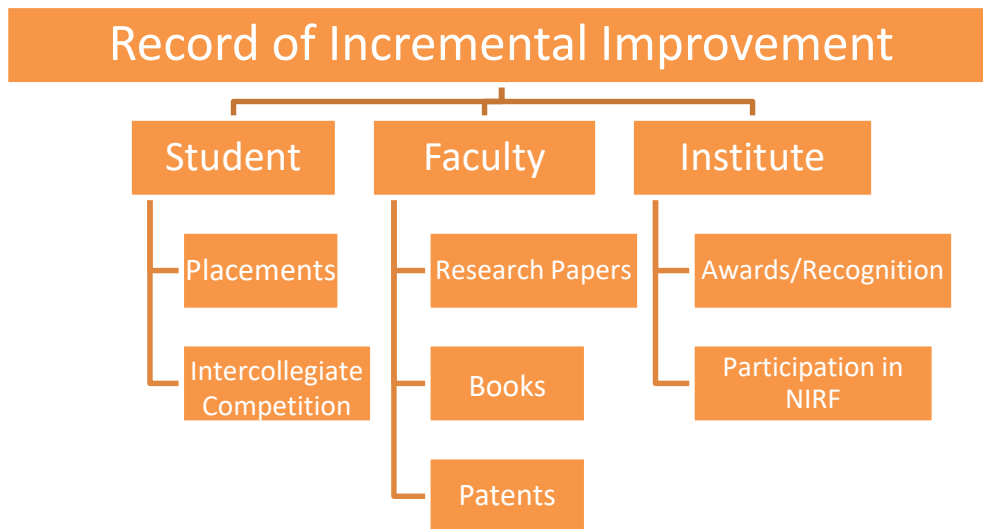
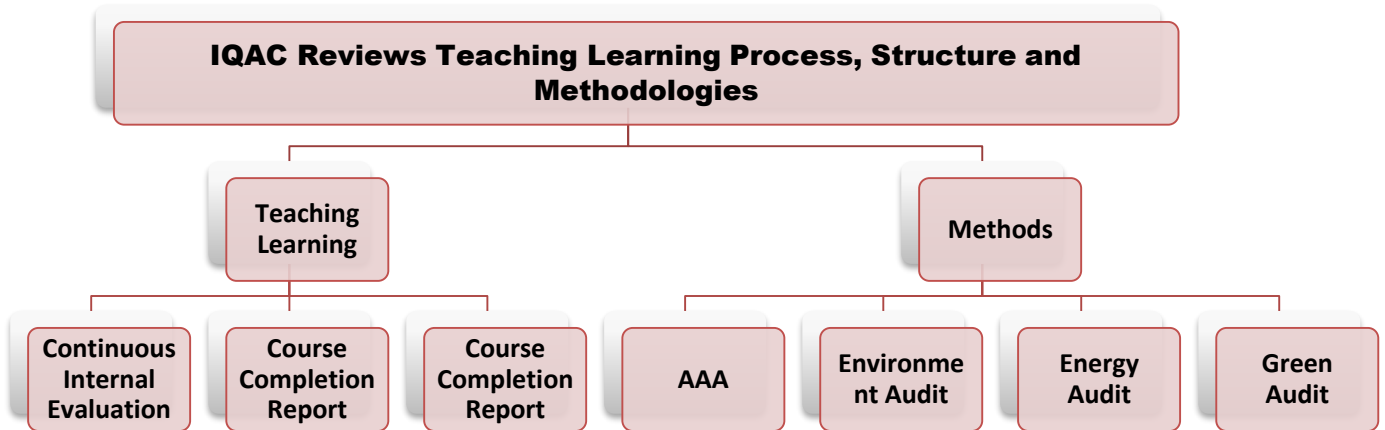
The IQAC ensures that all quality assurance processes are directly aligned with our Vision and Mission:

- **Vision Alignment – Developing Virtuous Leaders:** Through periodic reviews of the teaching-learning process, IQAC helps ensure that students not only receive academic knowledge but also develop the leadership qualities and ethical grounding necessary to serve society. This reflects the institution's commitment to nurturing virtuous leaders capable of driving positive change in a global setting.
- **Mission Alignment – Continuous Improvement:** The cell evaluates and enhances operational structures and methodologies to meet evolving educational standards. By embedding quality at every level, the IQAC supports the Mission of continuously improving both our students and ourselves in an ecosystem that nourishes both spirit and intellect.





**Modern Education Society's**  
**Neville Wadia Institute of Management Studies & Research, Pune**  
(Permanently affiliated to Savitribai Phule Pune University, Accredited by NAAC  
Approved by AICTE, recognized under 2 (f) & 12 (b) sections of UGC Act)  
Email: [director@nevillewadia.com](mailto:director@nevillewadia.com), Website: [nwimsr.mespune.org](http://nwimsr.mespune.org)  
**Dr. A. B. Dadas, Director**





**Modern Education Society's**  
**Neville Wadia Institute of Management Studies & Research, Pune**  
(Permanently affiliated to Savitribai Phule Pune University, Accredited by NAAC  
Approved by AICTE, recognized under 2 (f) & 12 (b) sections of UGC Act)  
Email: [director@nevillewadia.com](mailto:director@nevillewadia.com), Website: [nwimsr.mespune.org](http://nwimsr.mespune.org)  
**Dr. A. B. Dadas, Director**

## Learning Outcomes and Continuous Growth

The IQAC is deeply involved in refining the processes for assessing and enhancing learning outcomes, ensuring that they align with the Vision of developing leaders prepared to tackle real-world challenges.

### Refinements and Strategies Implemented:

- **Outcome-Based Education (OBE):** In response to industry needs and global standards, IQAC adopted Outcome-Based Education (OBE) frameworks that clearly define what students are expected to achieve by the end of each course and program. By identifying and tracking specific learning outcomes, the institution ensures that students acquire the essential skills and competencies necessary for leadership roles in the global market.
- **Regular Learning Outcome Assessments:** The IQAC has established a mechanism for continuous assessment of learning outcomes through a mix of formative and summative assessments. Regular feedback loops ensure that areas needing improvement are identified early, and corrective actions, such as additional workshops or personalized mentoring, are implemented to support student success.
- **Skill Enhancement Workshops:** Based on feedback from learning outcomes, IQAC has initiated skill-enhancement workshops in areas such as critical thinking, problem-solving, leadership, and communication. These workshops complement academic learning and equip students with the soft and hard skills necessary to excel in leadership roles, aligning with our Vision of nurturing virtuous leaders.
- **Graduate Outcome Monitoring:** IQAC tracks the career progression of graduates, assessing how well their education translates into real-world success. This data is used to further refine teaching methodologies and ensure that the institution remains responsive to the changing needs of the business environment.

## Increased Emphasis on Research

In line with the Vision and Mission, IQAC has driven the agenda to create a robust research culture that empowers both faculty and students to engage in meaningful and impactful research.

### Refinements and Strategies Implemented:

- **Establishment of Dedicated Research Cells:** Under IQAC's guidance, research cells were established within the institution to provide a structured environment for faculty and students to engage in research activities. These cells focus on specific areas such as *business innovation*, *analytics*, and *sustainability*, fostering a targeted approach to research that aligns with the global needs of the industry.



Director

Neville Wadia Institute of  
Management Studies & Research  
Pune-411 001.



## Modern Education Society's Neville Wadia Institute of Management Studies & Research, Pune

(Permanently affiliated to Savitribai Phule Pune University, Accredited by NAAC)

Approved by AICTE, recognized under 2 (f) & 12 (b) sections of UGC Act)

Email: [director@nevillewadia.com](mailto:director@nevillewadia.com), Website: [nwimsr.mespune.org](http://nwimsr.mespune.org)

**Dr. A. B. Dadas, Director**

- **Research Methodology Workshops:** IQAC organizes regular Research Methodology Workshops aimed at enhancing the research skills of both faculty and students. These workshops cover essential topics such as *data analysis, qualitative and quantitative research methods, hypothesis formulation, and report writing*. By refining research competencies, the institution helps foster a research-oriented mindset that contributes to continuous learning and intellectual growth.
- **Research Incentive Programs:** In an effort to motivate faculty and students to engage in high-quality research, IQAC recommended the introduction of research incentive programs. These programs reward faculty members for publishing in reputed journals, attending international conferences, and securing research grants. This initiative has led to an increase in the number of publications, higher quality research outputs, and collaborations with international institutions.
- **International Collaborations:** IQAC has encouraged partnerships with international universities and research institutions, which has expanded the scope of research and provided opportunities for cross-border academic exchanges. participation in global research conferences, thereby elevating the research standards of the institution.
- **Publication of Research Journals:** Under IQAC's direction, the institution launched its own research journal, providing a platform for faculty and students to publish their findings. The active involvement of students is the highlight of this initiative. This journal is also a tool for nurturing research culture and promoting academic discourse within the institution.

The Internal Quality Assurance Cell (IQAC) at Neville Wadia Institute of Management Studies and Research employs a purpose-driven approach to ensure the continuous improvement of the institution's academic and administrative processes. This approach is aligned with the institution's Vision of developing virtuous leaders and its Mission of fostering continuous growth and global competence among graduates.

To implement and maintain quality assurance effectively, IQAC performs an environmental appraisal, both internally and externally. This appraisal helps identify opportunities, threats, strengths, and weaknesses, which then inform strategic decisions aimed at enhancing the institution's performance.

### Internal Environmental Appraisal

The internal environmental appraisal focuses on the strengths and weaknesses of the institution's existing operations, resources, and processes. It allows IQAC to leverage the institution's internal capabilities while addressing areas that require improvement.



Director

Neville Wadia Institute of  
Management Studies & Research  
Pune-411 001.



**Modern Education Society's**  
**Neville Wadia Institute of Management Studies & Research, Pune**  
(Permanently affiliated to Savitribai Phule Pune University, Accredited by NAAC  
Approved by AICTE, recognized under 2 (f) & 12 (b) sections of UGC Act)  
Email: [director@nevillewadia.com](mailto:director@nevillewadia.com), Website: [nwimsr.mespune.org](http://nwimsr.mespune.org)  
**Dr. A. B. Dadas, Director**

### Strengths:

- 1. Legacy Brand :** The Brand Value of “Wadia” is of immense help as it embodies a Progressive Culture and High Quality Standards . The Generation which is our stakeholders are seekers of these exact benefits . The Brand Pull and its Perception has to be reached and its promise met to ensure the continuity of its benefits .
- 2. Strong Institutional Vision and Mission:** The institution has a clear Vision of developing virtuous leaders and a well-defined Mission that focuses on continuous improvement. This clarity of purpose drives all IQAC initiatives, ensuring that quality assurance processes are deeply rooted in the institution's core values.
- 3. Dedicated and Competent Faculty:** One of the institution's greatest strengths is its experienced and motivated faculty. IQAC utilizes this strength by providing faculty with continuous development opportunities, such as training in innovative teaching methods and research workshops. The competency of the faculty is reflected in improved student learning outcomes and higher-quality research.
- 4. Research-Oriented Culture:** The institution's strong emphasis on research, fostered by IQAC, has created a culture that values inquiry, innovation, and the production of knowledge. This culture is supported through Research Methodology Workshops, international collaborations, and incentives for research publications.
- 5. Robust Curriculum and Active Learning:** The curriculum is continuously reviewed and updated to meet industry standards, and active learning techniques like problem-based learning and case studies are integrated into the pedagogy. IQAC ensures that teaching-learning practices are dynamic, relevant, and responsive to the evolving needs of both students and industry.

### Further Improvement Areas being worked on Innovatively :

- 1. Need to enhance and upgrade Infrastructure for Technology-Enhanced Learning:** Although the institution has made strides in incorporating technology into the teaching-learning process, there is still room for improvement in terms of infrastructure for online and blended learning. IQAC has identified the need for better integration of digital resources and platforms to support modern educational practices.
- 2. Opportunities in Industry-Academia Collaboration:** While efforts have been made to strengthen industry relations through corporate events and research collaborations, the IQAC recognizes that there is a need to further deepen partnerships with industry to provide students with more exposure to real-world challenges and live projects. Here we are taking help of Alumni by creating a formal Alumni Association .
- 3. Student Participation in Research:** While the faculty has been actively engaged in research, student participation in research activities has been somewhat limited. IQAC has identified this as an area of focus and is working to implement initiatives that encourage and support student-led research projects.



  
Director



**Modern Education Society's**  
**Neville Wadia Institute of Management Studies & Research, Pune**  
(Permanently affiliated to Savitribai Phule Pune University, Accredited by NAAC  
Approved by AICTE, recognized under 2 (f) & 12 (b) sections of UGC Act)  
Email: [director@nevillewadia.com](mailto:director@nevillewadia.com), Website: [nwimsr.mespune.org](http://nwimsr.mespune.org)  
**Dr. A. B. Dadas, Director**

## External Environmental Appraisal

The external environmental appraisal examines the factors outside the institution that influence its operations. This analysis helps IQAC identify external opportunities and threats, enabling the institution to adapt and thrive in a competitive academic landscape.

### Opportunities:

- 1. Growing Demand for Management Education:** The increasing demand for business management programs presents an opportunity for the institution to expand its offerings and attract a larger student base. IQAC is working to refine curriculum offerings to capitalize on emerging trends .
- 2. Increased Globalization and International Collaboration:** With the growing trend toward globalization, the institution has an opportunity to foster international partnerships that enhance academic and research capabilities. IQAC aims to expand global collaborations through joint research projects, student and faculty exchange programs, and international conferences.
- 3. Corporate Social Responsibility (CSR) Opportunities:** Many corporations are now focusing on Corporate Social Responsibility (CSR) initiatives that support education and skill development. IQAC sees an opportunity to leverage CSR partnerships to fund institutional activities, improve infrastructure, and provide scholarships for deserving students.

### Threats:

- 1. Intense Competition in Higher Education:** The increasing number of management institutions and online education platforms presents a challenge in terms of attracting top students and faculty. IQAC responds to this threat by focusing on quality, enhancing the student experience, and ensuring that the institution's offerings are unique and competitive.
- 2. Rapid Changes in Industry Demands:** The fast-paced changes in the business world, particularly in areas such as digital transformation and sustainability, require constant adaptation of curricula and skill-building opportunities. IQAC monitors these changes closely and proactively revises course offerings and teaching methodologies to ensure that graduates remain relevant and employable.
- 3. Economic Fluctuations:** Economic uncertainties can impact student enrollment and corporate partnerships. IQAC mitigates this threat by promoting diversified funding sources, including alumni contributions and CSR partnerships, and by maintaining financial prudence in institutional operations.
- 4. Regulatory Changes:** Changes in educational regulations and policies, both at the national and international levels, like the New Education Policy may present both challenges and opportunities , to the institution's operations and strategic goals. IQAC stays abreast of these regulatory shifts and adjusts policies and practices to ensure compliance and sustainability.



  
Director



**Modern Education Society's**  
**Neville Wadia Institute of Management Studies & Research, Pune**  
(Permanently affiliated to Savitribai Phule Pune University, Accredited by NAAC  
Approved by AICTE, recognized under 2 (f) & 12 (b) sections of UGC Act)  
Email: [director@nevillewadia.com](mailto:director@nevillewadia.com), Website: [nwimsr.mespune.org](http://nwimsr.mespune.org)  
**Dr. A. B. Dadas, Director**

## Purpose-Driven Approach of IQAC

By conducting a comprehensive environmental appraisal, IQAC adopts a purpose-driven approach to quality assurance, ensuring that internal strengths are leveraged, weaknesses are addressed, external opportunities are capitalized upon, and threats are mitigated. This approach helps align the institution's strategies with its Vision and Mission, ensuring continuous growth, relevance, and excellence in education.

- **Strategic Response to Internal Appraisal:** IQAC utilizes the institution's strengths, such as a strong faculty, research-oriented culture, and curriculum innovation, to drive continuous improvement. Simultaneously, IQAC addresses weaknesses by enhancing infrastructure for digital learning, fostering industry partnerships, and promoting greater student involvement in research activities.
- **Strategic Response to External Appraisal:** In response to external opportunities, IQAC expands international collaborations, integrates cutting-edge technologies into the learning process, and engages with CSR initiatives to attract funding and partnerships. Threats such as intense competition and regulatory changes are mitigated through a focus on quality, adaptability, and compliance.



Director