




Modern Education Society's
Neville Wadia Institute of Management Studies & Research, Pune
(Permanently affiliated to Savitribai Phule Pune University, Accredited by NAAC
Approved by AICTE, recognized under 2 (f) & 12 (b) sections of UGC Act)
Email: director@nevillewadia.com, Website: nwimsr.mespune.org
Dr. A. B. Dadas, Director

ALUMNI FEEDBACK
ABOUT ACADEMIC
PERFORMANCE,
AMBIENCE AND
CURRICULUM

2022-23



19, Late Prin. V. K. Joag Path, Pune – 411001 Maharashtra, (India)
Tel: 020-26163275, 26160788, 020-26169949 (Director)


Director
Neville Wadia Institute of
Management Studies & Research
Pune-411 001.



Modern Education Society's Neville Wadia Institute of Management Studies & Research, Pune

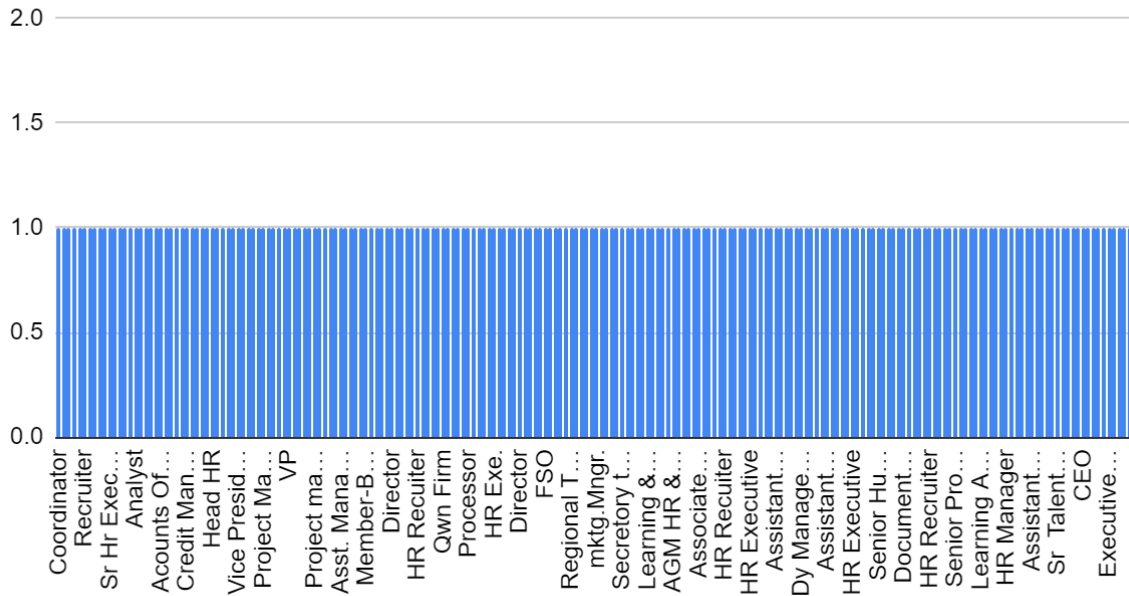
(Permanently affiliated to Savitribai Phule Pune University, Accredited by NAAC

Approved by AICTE, recognized under 2 (f) & 12 (b) sections of UGC Act)

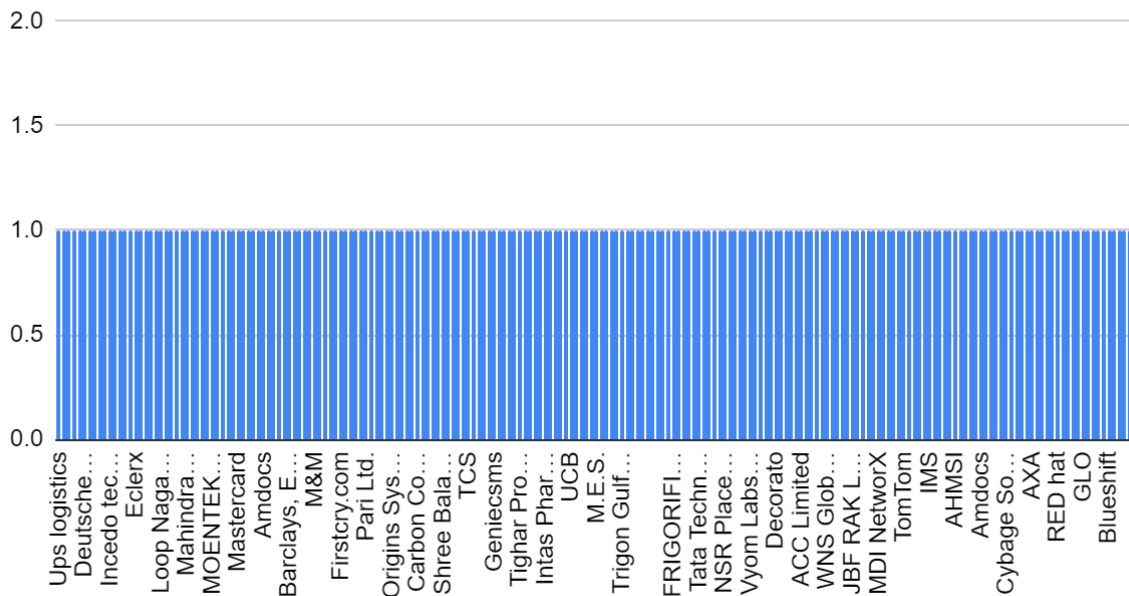
Email: director@nevillewadia.com, Website: nwmsr.mespune.org

Dr. A. B. Dadas, Director


Designation
210 responses



Name of the Organization
210 responses



19, Late Prin. V. K. Joag Path, Pune – 411001 Maharashtra, (India)
Tel: 020-26163275, 26160788, 020-26169949 (Director)


Director
Neville Wadia Institute of
Management Studies & Research
Pune-411 001.



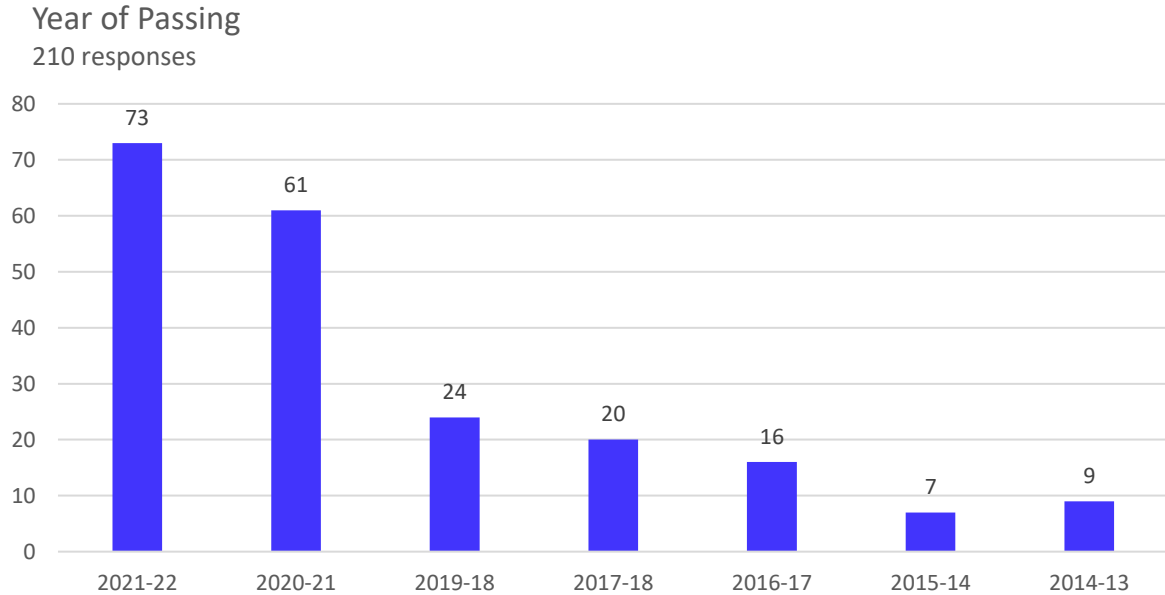
Modern Education Society's Neville Wadia Institute of Management Studies & Research, Pune

(Permanently affiliated to Savitribai Phule Pune University, Accredited by NAAC)

Approved by AICTE, recognized under 2 (f) & 12 (b) sections of UGC Act)

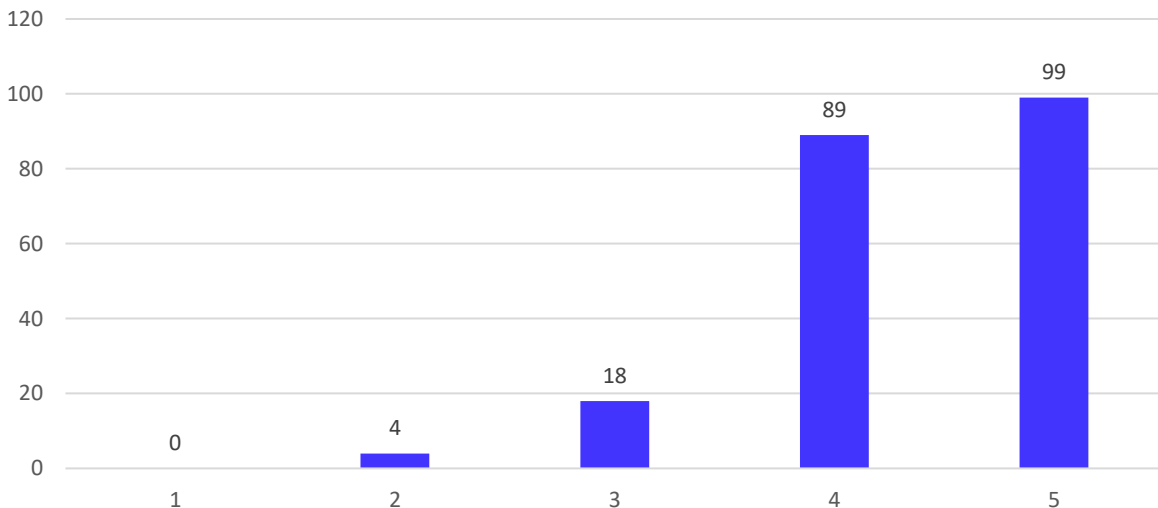
Email: director@nevillewadia.com, Website: nwimsr.mespune.org

Dr. A. B. Dadas, Director




How was the overall academic performance of the Institution?

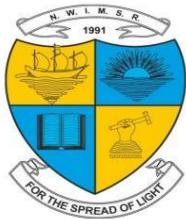
210 responses



19, Late Prin. V. K. Joag Path, Pune – 411001 Maharashtra, (India)

Tel: 020-26163275, 26160788, 020-26169949 (Director)


Director
Neville Wadia Institute of
Management Studies & Research
Pune-411 001.



**Modern Education Society's
Neville Wadia Institute of Management Studies & Research, Pune**

(Permanently affiliated to Savitribai Phule Pune University, Accredited by NAAC

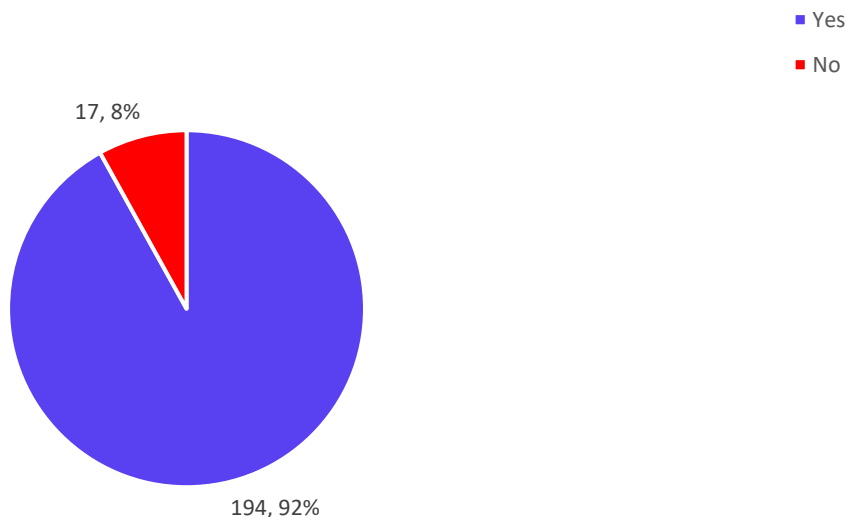
Approved by AICTE, recognized under 2 (f) & 12 (b) sections of UGC Act)

Email: director@nevillewadia.com, Website: nwimsr.mespune.org

Dr. A. B. Dadas, Director

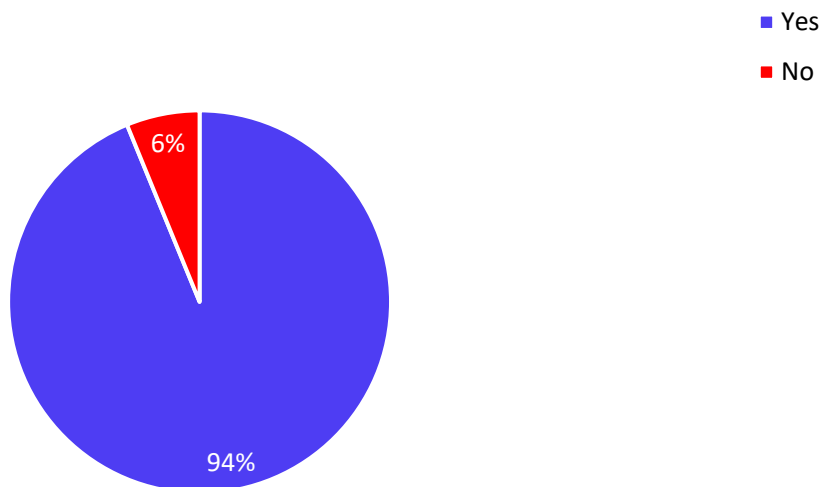
Institute has well established and maintained academic support facilities and physical facilities.

210 responses




Adequate computer laboratory facility was available.

210 responses



19, Late Prin. V. K. Joag Path, Pune – 411001 Maharashtra, (India)
Tel: 020-26163275, 26160788, 020-26169949 (Director)


Director
Neville Wadia Institute of
Management Studies & Research
Pune-411 001.



Modern Education Society's Neville Wadia Institute of Management Studies & Research, Pune

(Permanently affiliated to Savitribai Phule Pune University, Accredited by NAAC)

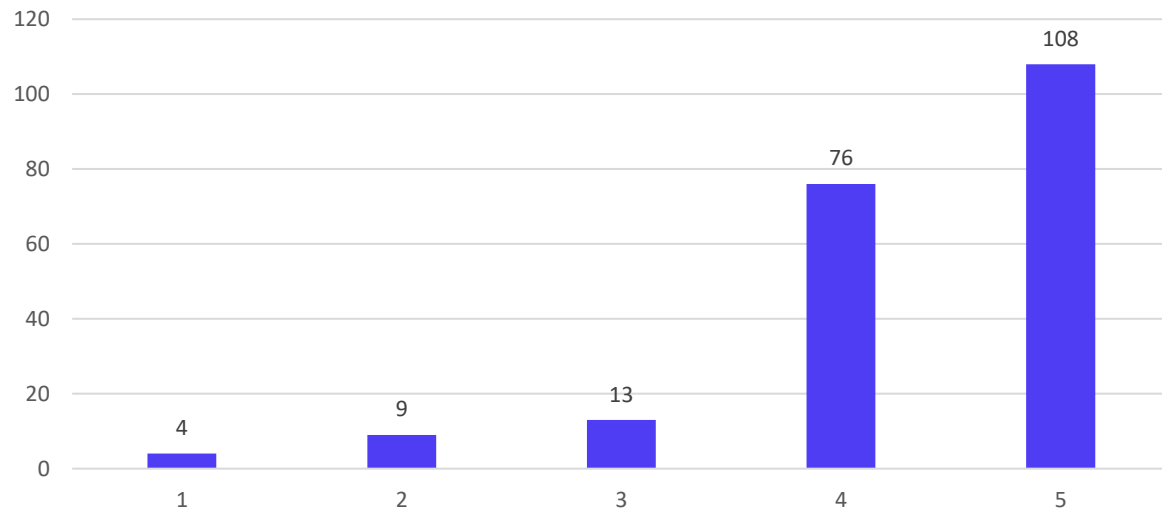
Approved by AICTE, recognized under 2 (f) & 12 (b) sections of UGC Act)

Email: director@nevillewadia.com, Website: nwimsr.mespune.org

Dr. A. B. Dadas, Director

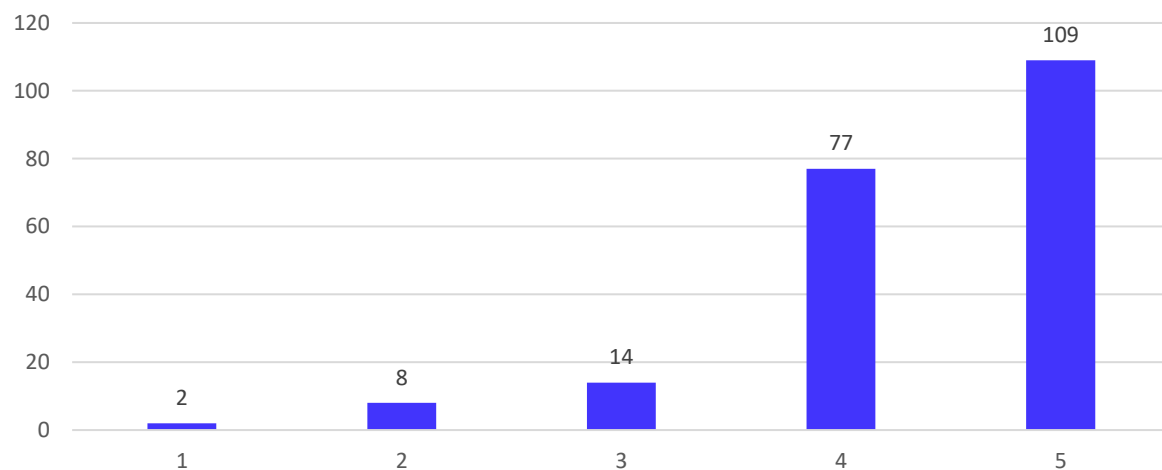
How will you rate the general ambience in the institute?

210 responses




How do you rate the overall gain in your knowledge / skills during MBA Programme?

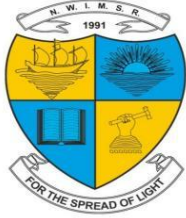
210 responses



19, Late Prin. V. K. Joag Path, Pune – 411001 Maharashtra, (India)

Tel: 020-26163275, 26160788, 020-26169949 (Director)


Director
Neville Wadia Institute of
Management Studies & Research
Pune-411 001.



Modern Education Society's Neville Wadia Institute of Management Studies & Research, Pune

(Permanently affiliated to Savitribai Phule Pune University, Accredited by NAAC

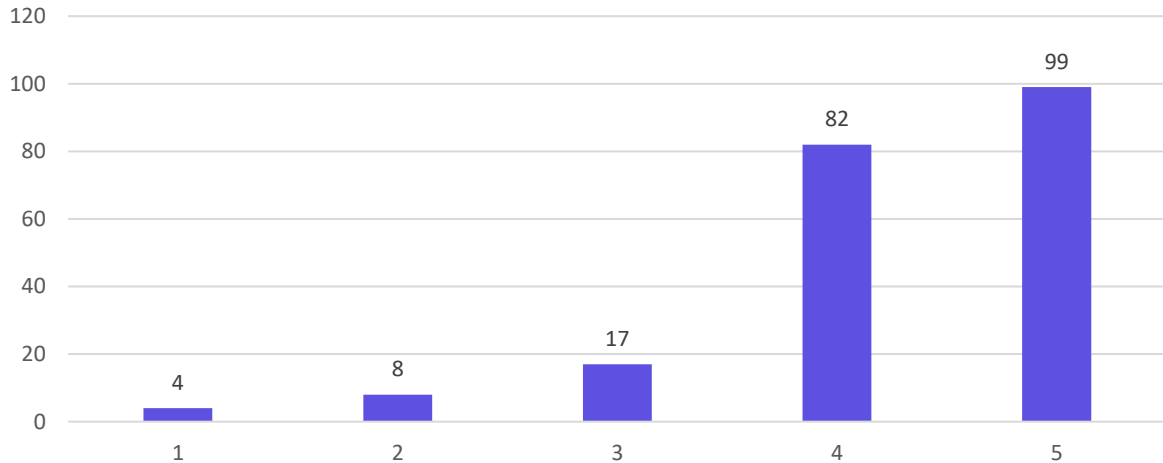
Approved by AICTE, recognized under 2 (f) & 12 (b) sections of UGC Act)

Email: director@nevillewadia.com, Website: nwimsr.mespune.org

Dr. A. B. Dadas, Director

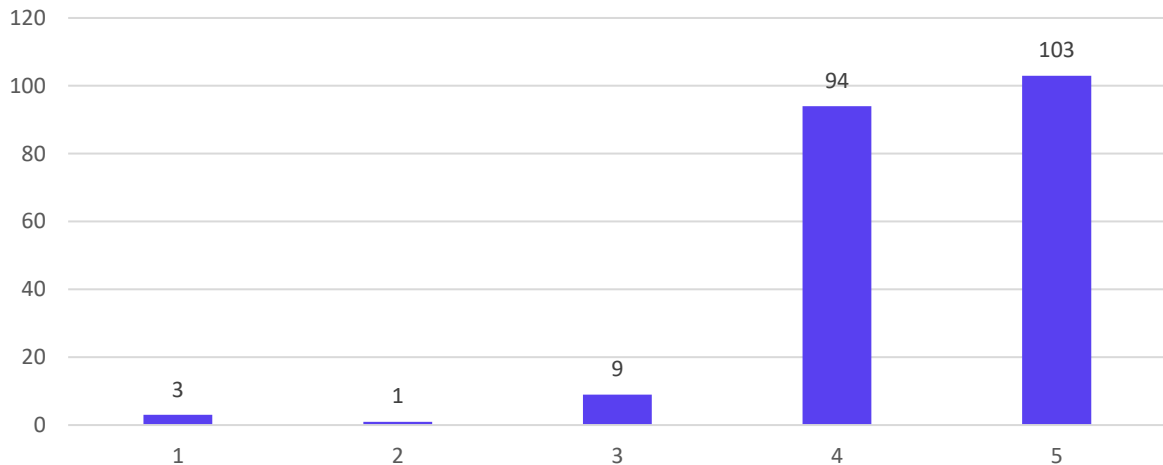
How will rate the learning in relation to the real life applications of it?

210 responses




Whether curriculum inculcates professional ethics and life-long learning?

210 responses



19, Late Prin. V. K. Joag Path, Pune – 411001 Maharashtra, (India)

Tel: 020-26163275, 26160788, 020-26169949 (Director)


Director
Neville Wadia Institute of
Management Studies & Research
Pune-411 001.



**Modern Education Society's
Neville Wadia Institute of Management Studies & Research, Pune**

(Permanently affiliated to Savitribai Phule Pune University, Accredited by NAAC

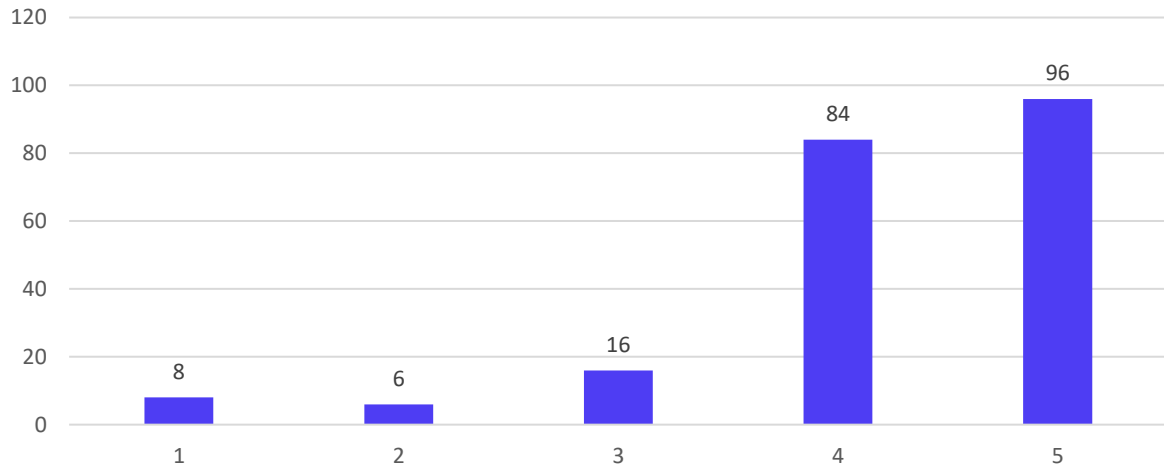
Approved by AICTE, recognized under 2 (f) & 12 (b) sections of UGC Act)

Email: director@nevillewadia.com, Website: nwimsr.mespune.org

Dr. A. B. Dadas, Director

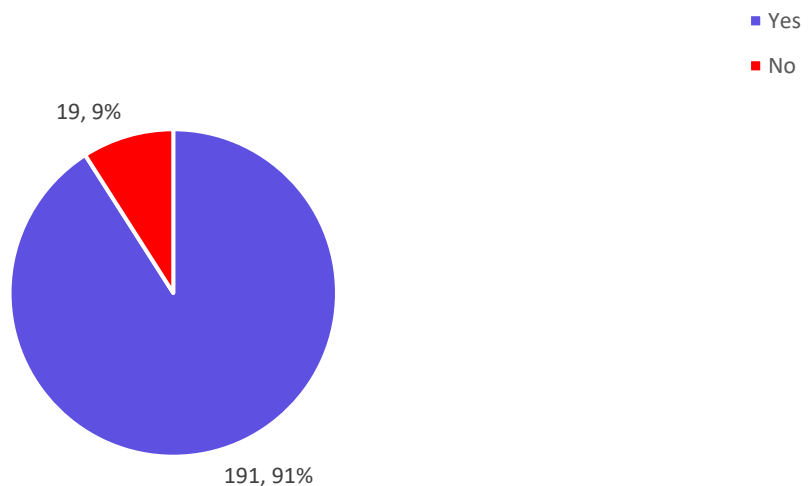
How do you rate the opportunities provided to participate in multidisciplinary project/ activities?

210 responses




Was the institute equipped with all facilities related to curriculum?

210 responses



19, Late Prin. V. K. Joag Path, Pune – 411001 Maharashtra, (India)

Tel: 020-26163275, 26160788, 020-26169949 (Director)


Director
Neville Wadia Institute of
Management Studies & Research
Pune-411 001.



Modern Education Society's Neville Wadia Institute of Management Studies & Research, Pune

(Permanently affiliated to Savitribai Phule Pune University, Accredited by NAAC)

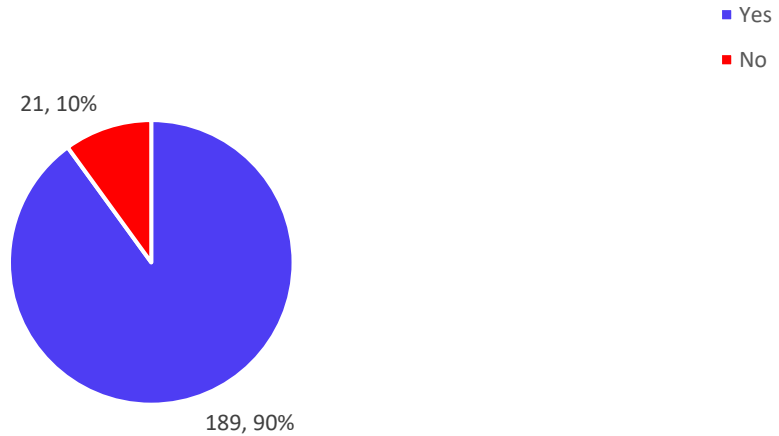
Approved by AICTE, recognized under 2 (f) & 12 (b) sections of UGC Act)

Email: director@nevillewadia.com, Website: nwimsr.mespune.org

Dr. A. B. Dadas, Director

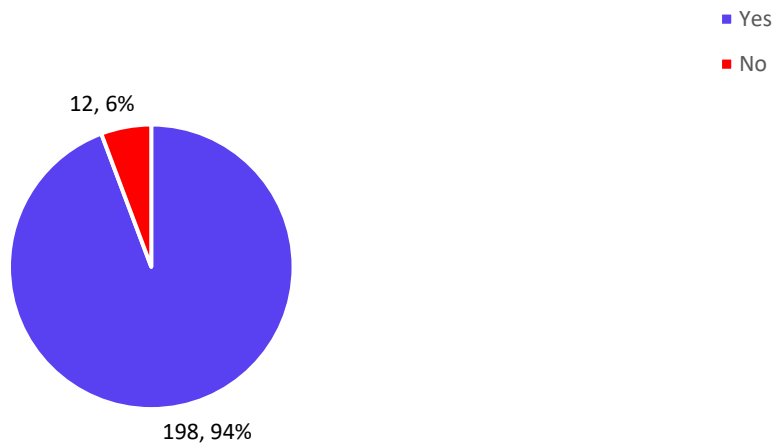
Did the Institute provide student centric teaching-learning process?

210 responses




Did the institute support to enhance soft skills and employability skills?

210 responses



19, Late Prin. V. K. Joag Path, Pune – 411001 Maharashtra, (India)
Tel: 020-26163275, 26160788, 020-26169949 (Director)


Director
Neville Wadia Institute of
Management Studies & Research
Pune-411 001.



Modern Education Society's Neville Wadia Institute of Management Studies & Research, Pune

(Permanently affiliated to Savitribai Phule Pune University, Accredited by NAAC)

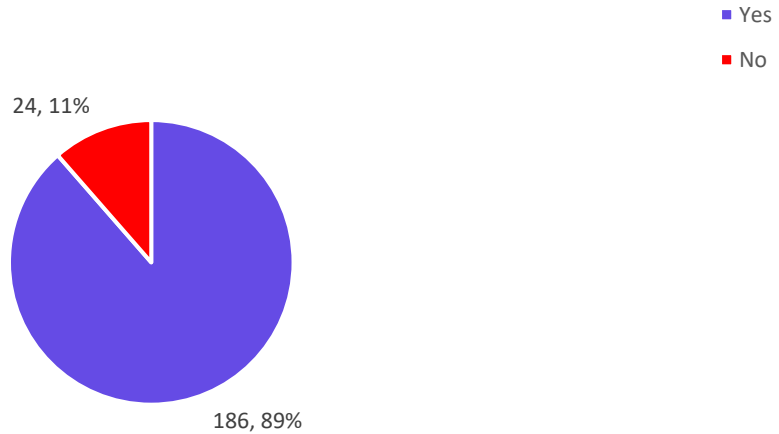
Approved by AICTE, recognized under 2 (f) & 12 (b) sections of UGC Act)

Email: director@nevillewadia.com, Website: nwimsr.mespune.org

Dr. A. B. Dadas, Director

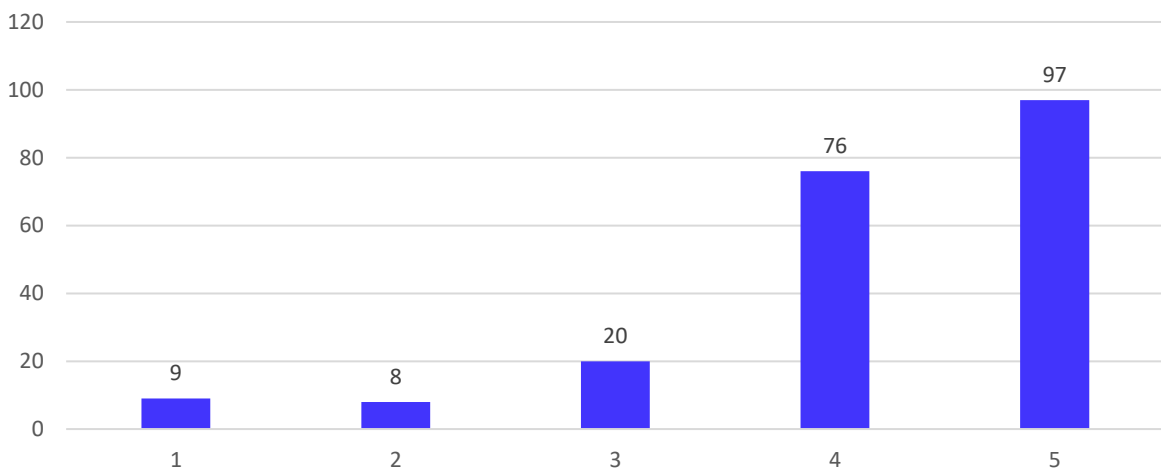
Whether curriculum inculcates professional ethics and life-long learning?

210 responses




How do you rate the relevance of up-gradation of curriculum to the current trends of the business world?

210 responses



19, Late Prin. V. K. Joag Path, Pune – 411001 Maharashtra, (India)
Tel: 020-26163275, 26160788, 020-26169949 (Director)


Director
Neville Wadia Institute of
Management Studies & Research
Pune-411 001.



Modern Education Society's Neville Wadia Institute of Management Studies & Research, Pune

(Permanently affiliated to Savitribai Phule Pune University, Accredited by NAAC

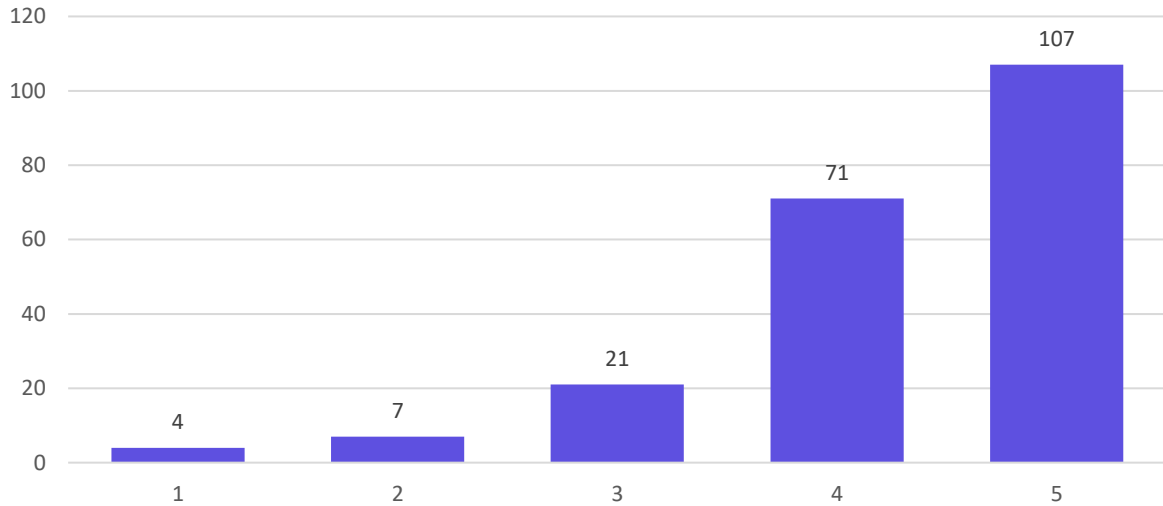
Approved by AICTE, recognized under 2 (f) & 12 (b) sections of UGC Act)

Email: director@nevillewadia.com, Website: nwimsr.mespune.org

Dr. A. B. Dadas, Director


Cleanliness in the institute

210 responses



19, Late Prin. V. K. Joag Path, Pune – 411001 Maharashtra, (India)

Tel: 020-26163275, 26160788, 020-26169949 (Director)


Director
Neville Wadia Institute of
Management Studies & Research
Pune-411 001.