


**Modern Education Society's**  
**Neville Wadia Institute of Management Studies & Research, Pune**  
(Permanently affiliated to Savitribai Phule Pune University, Accredited by NAAC  
Approved by AICTE, recognized under 2 (f) & 12 (b) sections of UGC Act)  
Email: [director@nevillewadia.com](mailto:director@nevillewadia.com), Website: [nwimsr.mespune.org](http://nwimsr.mespune.org)  
**Dr. A. B. Dadas, Director**

**ALUMNI FEEDBACK**  
**ABOUT ACADEMIC**  
**PERFORMANCE,**  
**AMBIENCE AND**  
**CURRICULUM**

**2021-22**



19, Late Prin. V. K. Joag Path, Pune – 411001 Maharashtra, (India)  
Tel: 020-26163275, 26160788, 020-26169949 (Director)

  
Director  
Neville Wadia Institute of  
Management Studies & Research  
Pune-411 001.



**Modern Education Society's  
Neville Wadia Institute of Management Studies & Research, Pune**

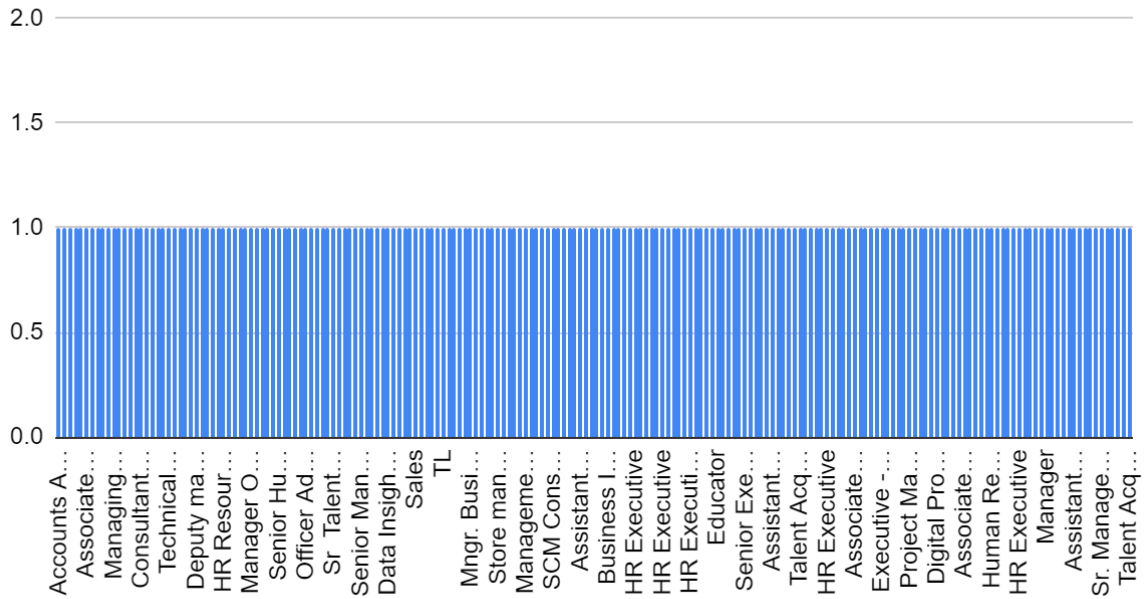
*(Permanently affiliated to Savitribai Phule Pune University, Accredited by NAAC*

*Approved by AICTE, recognized under 2 (f) & 12 (b) sections of UGC Act)*

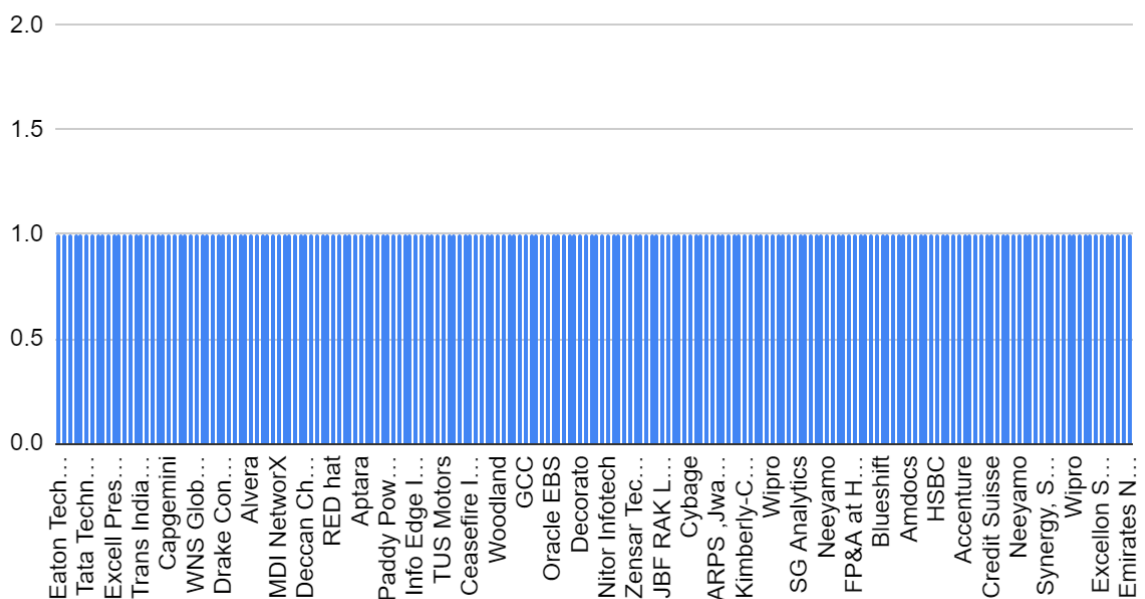
Email: [director@nevillewadia.com](mailto:director@nevillewadia.com), Website: [nwimsr.mespune.org](http://nwimsr.mespune.org)

**Dr. A. B. Dadas, Director**

Designation  
196 responses




Name of the Organization  
196 responses



**19, Late Prin. V. K. Joag Path, Pune – 411001 Maharashtra, (India)**

**Tel: 020-26163275, 26160788, 020-26169949 (Director)**

  
**Director**  
**Neville Wadia Institute of Management Studies & Research**  
**Pune-411 001.**



## Modern Education Society's Neville Wadia Institute of Management Studies & Research, Pune

(Permanently affiliated to Savitribai Phule Pune University, Accredited by NAAC)

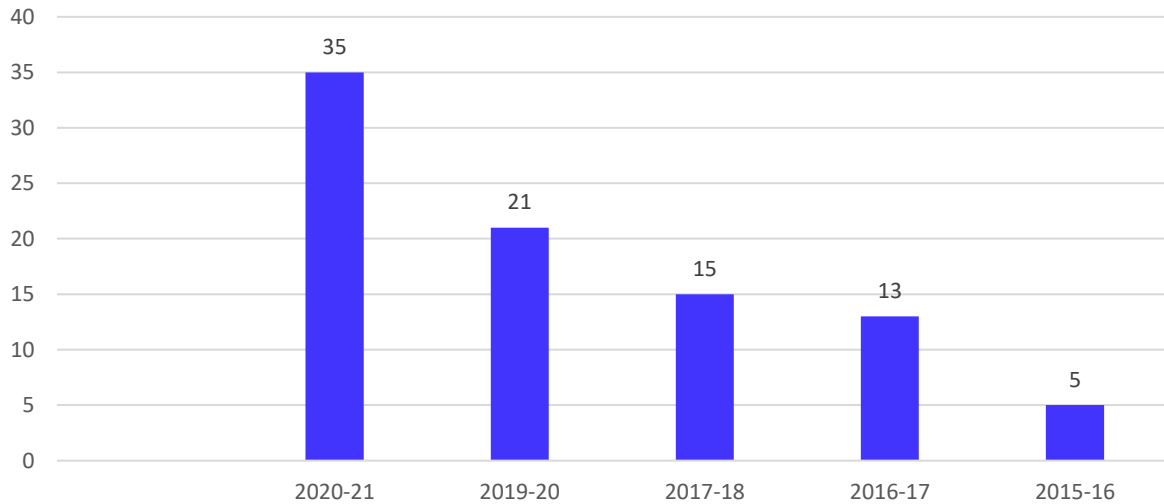
Approved by AICTE, recognized under 2 (f) & 12 (b) sections of UGC Act)

Email: [director@nevillewadia.com](mailto:director@nevillewadia.com), Website: [nwmsr.mespune.org](http://nwmsr.mespune.org)

**Dr. A. B. Dadas, Director**

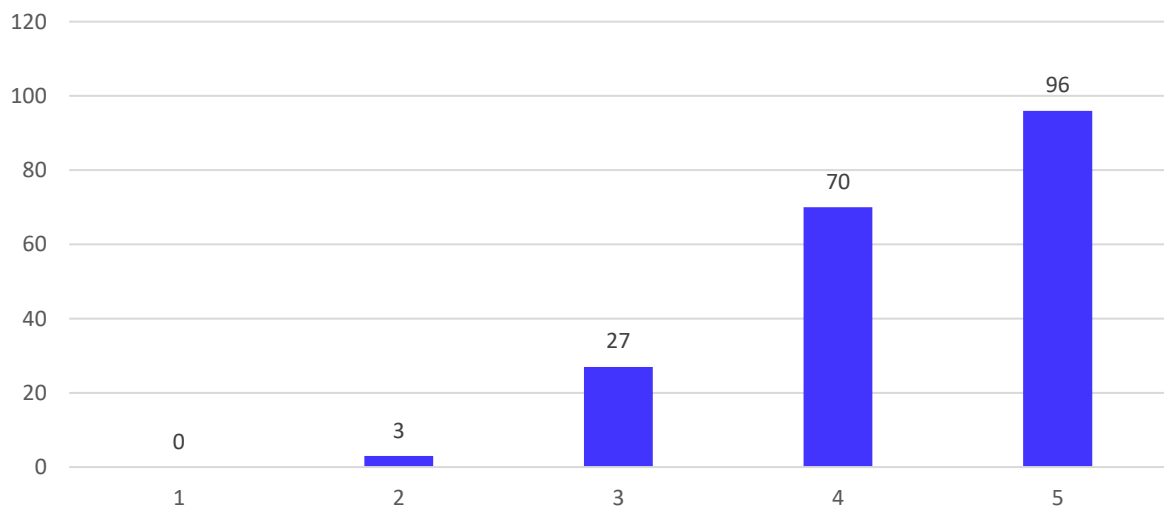
### Year of Passing

196 responses




### How was the overall academic performance of the Institution?

196 responses



19, Late Prin. V. K. Joag Path, Pune – 411001 Maharashtra, (India)

Tel: 020-26163275, 26160788, 020-26169949 (Director)

  
Director  
Neville Wadia Institute of  
Management Studies & Research  
Pune-411 001.



**Modern Education Society's  
Neville Wadia Institute of Management Studies & Research, Pune**

*(Permanently affiliated to Savitribai Phule Pune University, Accredited by NAAC*

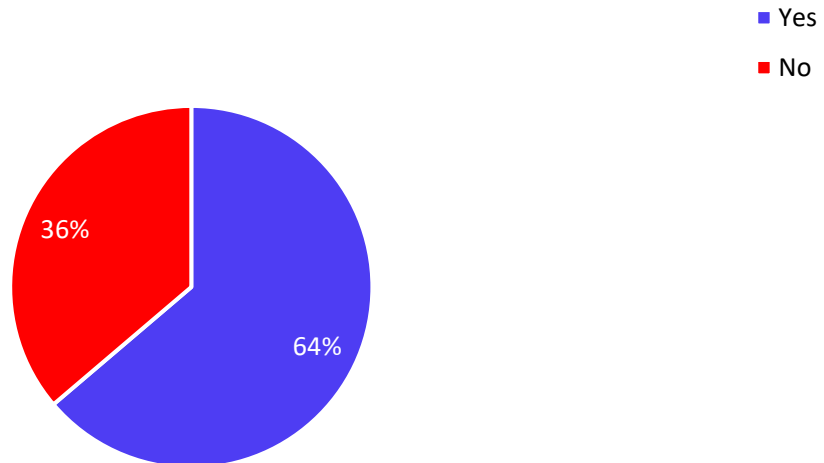
*Approved by AICTE, recognized under 2 (f) & 12 (b) sections of UGC Act)*

Email: [director@nevillewadia.com](mailto:director@nevillewadia.com), Website: [nwimsr.mespune.org](http://nwimsr.mespune.org)

**Dr. A. B. Dadas, Director**

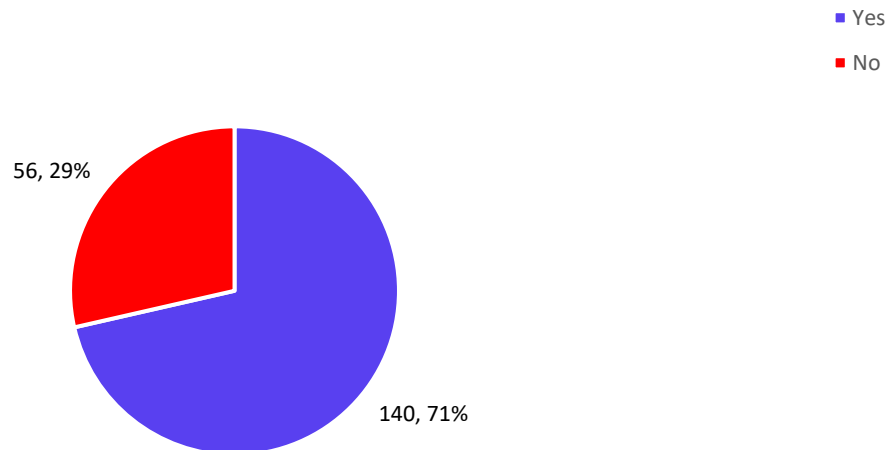
Adequate computer laboratory facility was available.

196 responses




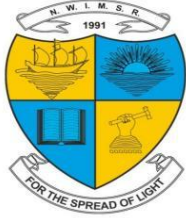
Did the institute support to enhance soft skills and employability skills?

196 responses



19, Late Prin. V. K. Joag Path, Pune – 411001 Maharashtra, (India)  
Tel: 020-26163275, 26160788, 020-26169949 (Director)

  
**Director**  
Neville Wadia Institute of  
Management Studies & Research  
Pune-411 001.



**Modern Education Society's  
Neville Wadia Institute of Management Studies & Research, Pune**

*(Permanently affiliated to Savitribai Phule Pune University, Accredited by NAAC*

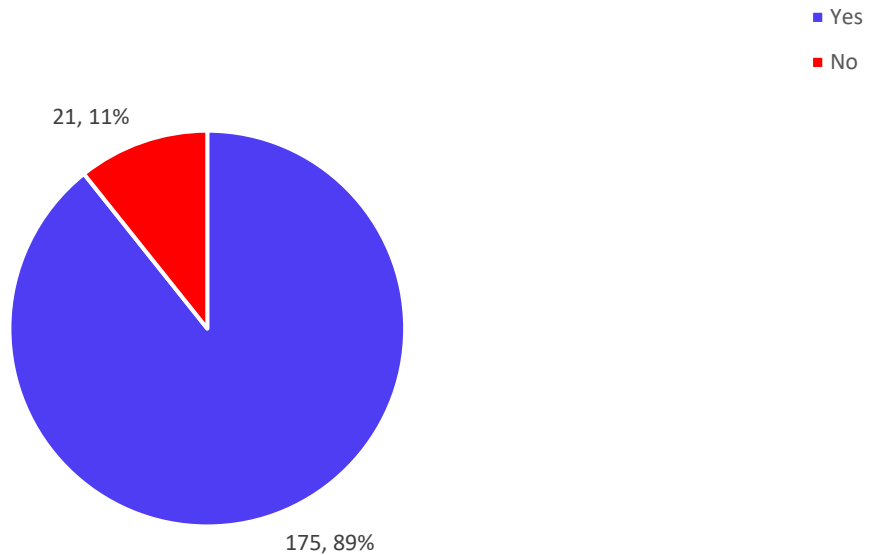
*Approved by AICTE, recognized under 2 (f) & 12 (b) sections of UGC Act)*

Email: [director@nevillewadia.com](mailto:director@nevillewadia.com), Website: [nwimsr.mespune.org](http://nwimsr.mespune.org)

**Dr. A. B. Dadas, Director**

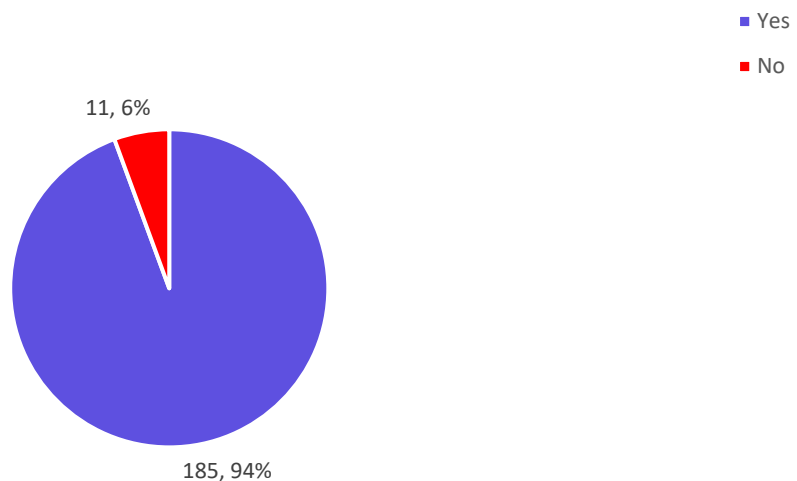
Did the Institute provide student centric teaching-learning process?

196 responses




Was the institute equipped with all facilities related to curriculum?

196 responses



19, Late Prin. V. K. Joag Path, Pune – 411001 Maharashtra, (India)

Tel: 020-26163275, 26160788, 020-26169949 (Director)

  
Director  
Neville Wadia Institute of  
Management Studies & Research  
Pune-411 001.



## Modern Education Society's Neville Wadia Institute of Management Studies & Research, Pune

(Permanently affiliated to Savitribai Phule Pune University, Accredited by NAAC)

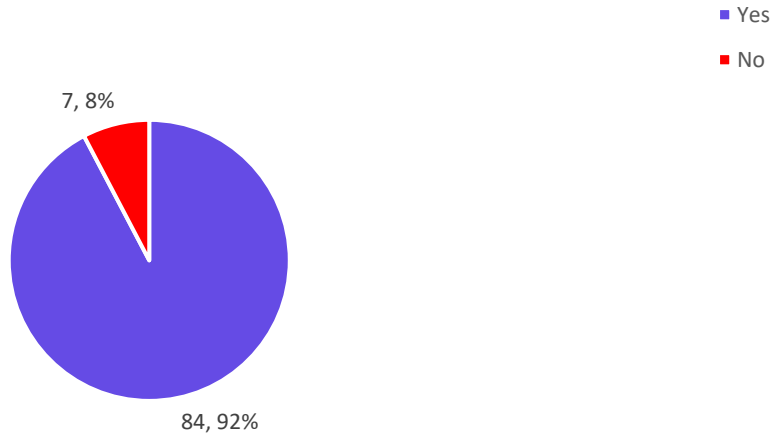
Approved by AICTE, recognized under 2 (f) & 12 (b) sections of UGC Act)

Email: [director@nevillewadia.com](mailto:director@nevillewadia.com), Website: [nwimsr.mespune.org](http://nwimsr.mespune.org)

**Dr. A. B. Dadas, Director**

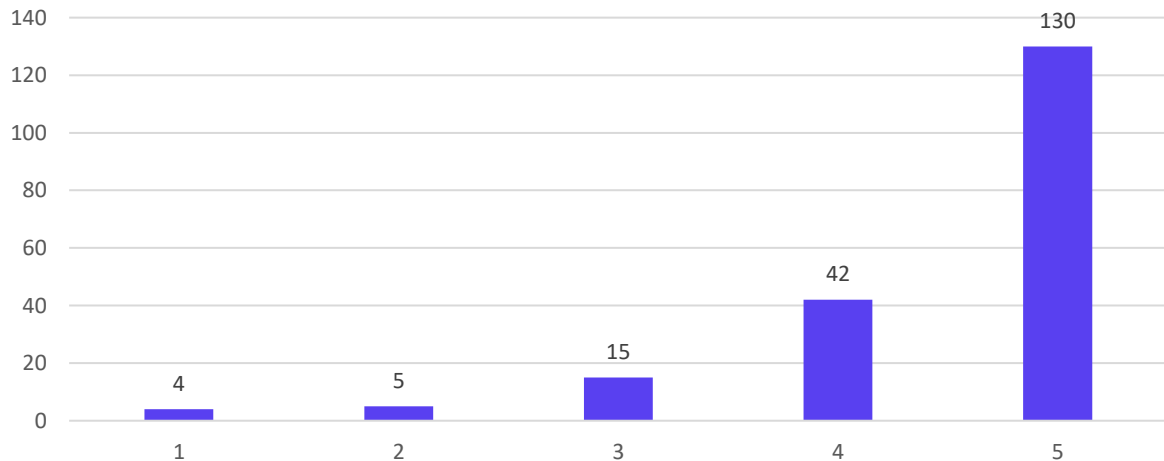
Whether curriculum inculcates professional ethics and life-long learning?

91 responses




Whether curriculum inculcates professional ethics and life-long learning?

196 responses



19, Late Prin. V. K. Joag Path, Pune – 411001 Maharashtra, (India)

Tel: 020-26163275, 26160788, 020-26169949 (Director)

  
Director  
Neville Wadia Institute of  
Management Studies & Research  
Pune-411 001.



## Modern Education Society's Neville Wadia Institute of Management Studies & Research, Pune

(Permanently affiliated to Savitribai Phule Pune University, Accredited by NAAC

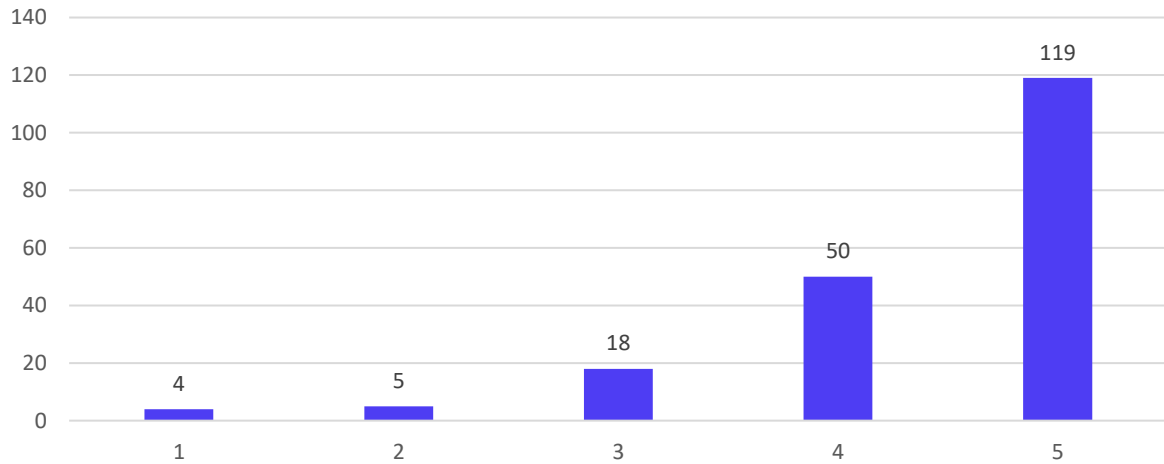
Approved by AICTE, recognized under 2 (f) & 12 (b) sections of UGC Act)

Email: [director@nevillewadia.com](mailto:director@nevillewadia.com), Website: [nwimsr.mespune.org](http://nwimsr.mespune.org)

**Dr. A. B. Dadas, Director**

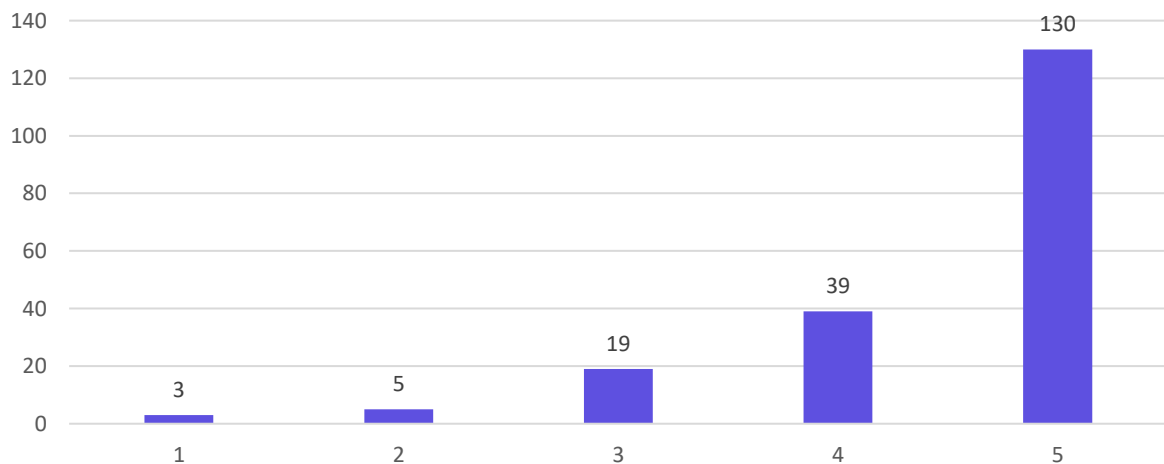
How do you rate the opportunities provided to participate in multidisciplinary project/ activities?

196 responses




How will rate the learning in relation to the real life applications of it?

196 responses



19, Late Prin. V. K. Joag Path, Pune – 411001 Maharashtra, (India)

Tel: 020-26163275, 26160788, 020-26169949 (Director)

  
Director  
Neville Wadia Institute of  
Management Studies & Research  
Pune-411 001.



## Modern Education Society's Neville Wadia Institute of Management Studies & Research, Pune

*(Permanently affiliated to Savitribai Phule Pune University, Accredited by NAAC*

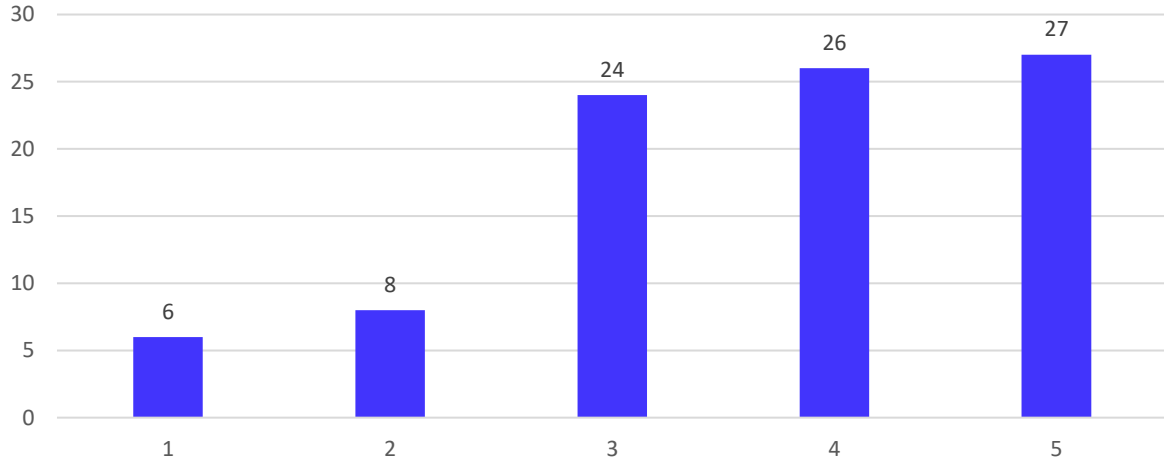
*Approved by AICTE, recognized under 2 (f) & 12 (b) sections of UGC Act)*

Email: [director@nevillewadia.com](mailto:director@nevillewadia.com), Website: [nwimsr.mespune.org](http://nwimsr.mespune.org)

**Dr. A. B. Dadas, Director**

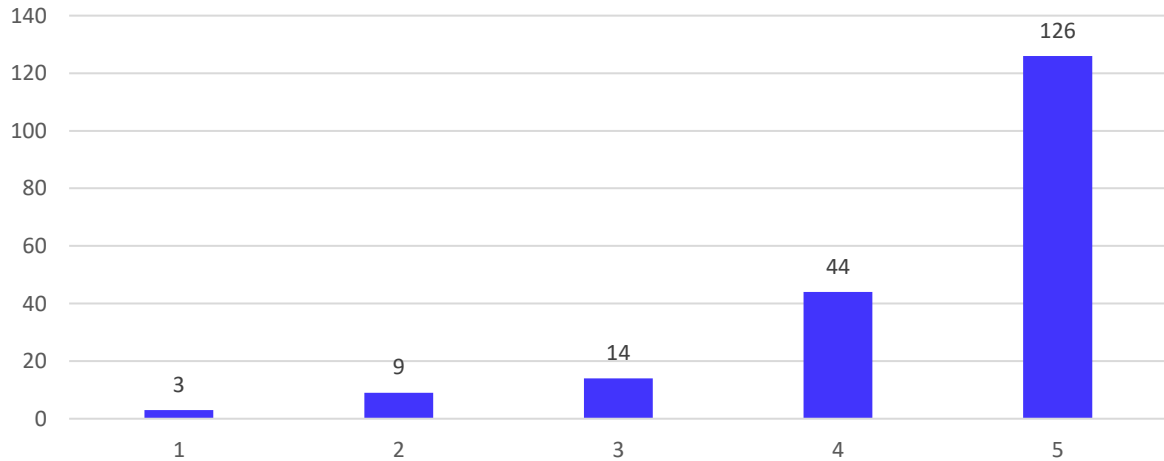
How do you rate the relevance of up-gradation of curriculum to the current trends of the business world?

91 responses




How do you rate the overall gain in your knowledge / skills during MBA Programme?

196 responses

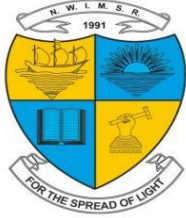


19, Late Prin. V. K. Joag Path, Pune – 411001 Maharashtra, (India)

Tel: 020-26163275, 26160788, 020-26169949 (Director)

  
Director  
Neville Wadia Institute of  
Management Studies & Research  
Pune-411 001.





**Modern Education Society's  
Neville Wadia Institute of Management Studies & Research, Pune**

*(Permanently affiliated to Savitribai Phule Pune University, Accredited by NAAC*

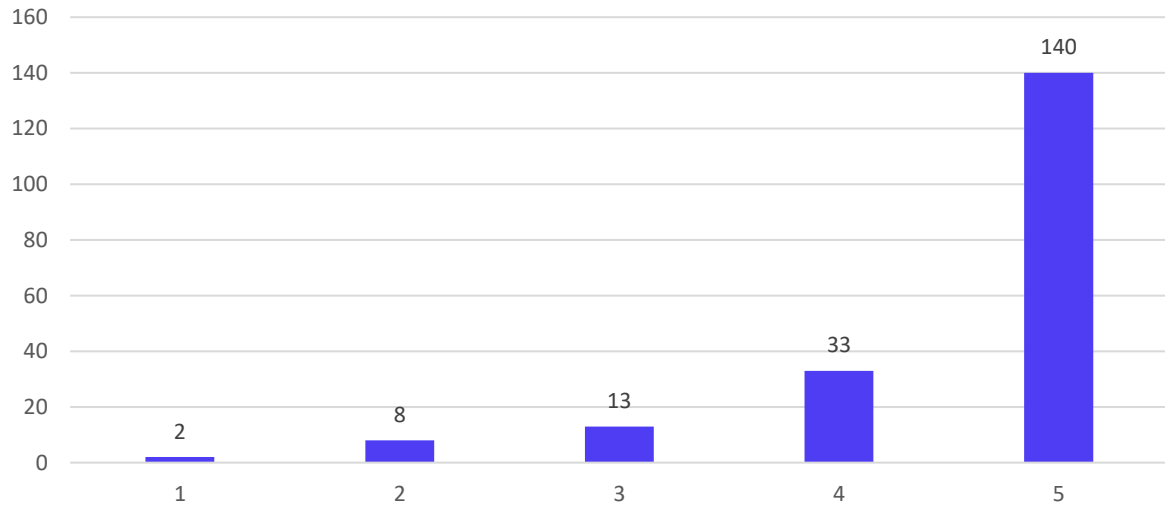
*Approved by AICTE, recognized under 2 (f) & 12 (b) sections of UGC Act)*

Email: [director@nevillewadia.com](mailto:director@nevillewadia.com), Website: [nwimsr.mespune.org](http://nwimsr.mespune.org)

**Dr. A. B. Dadas, Director**

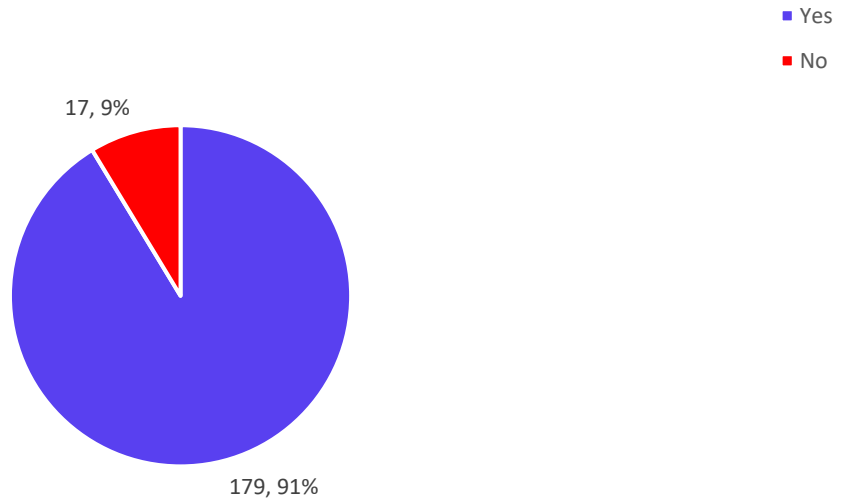
How will you rate the general ambience in the institute?

196 responses




Institute has well established and maintained academic support facilities and physical facilities.

196 responses



19, Late Prin. V. K. Joag Path, Pune – 411001 Maharashtra, (India)

Tel: 020-26163275, 26160788, 020-26169949 (Director)

  
Director  
Neville Wadia Institute of  
Management Studies & Research  
Pune-411 001.



## Modern Education Society's Neville Wadia Institute of Management Studies & Research, Pune

*(Permanently affiliated to Savitribai Phule Pune University, Accredited by NAAC*

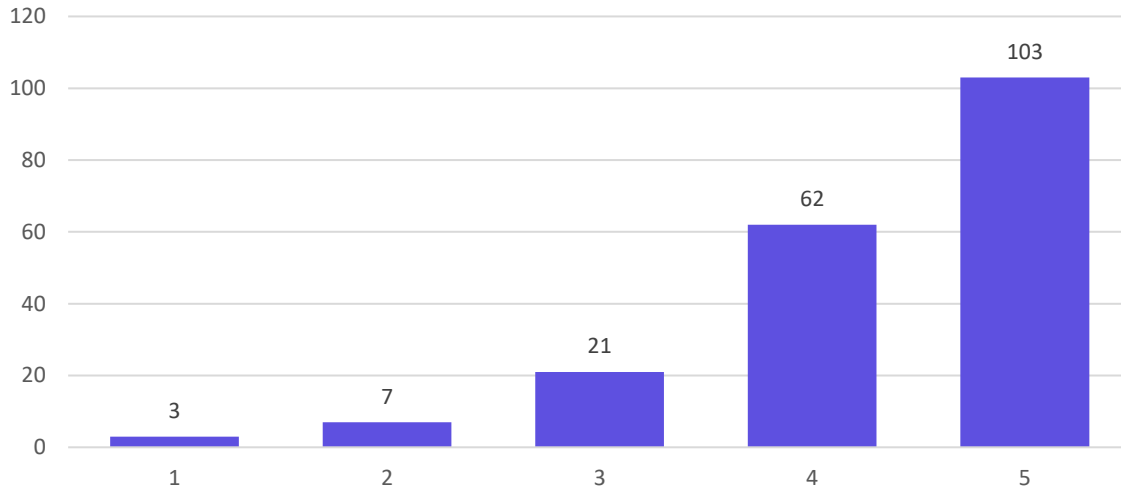
*Approved by AICTE, recognized under 2 (f) & 12 (b) sections of UGC Act)*

Email: [director@nevillewadia.com](mailto:director@nevillewadia.com), Website: [nwimsr.mespune.org](http://nwimsr.mespune.org)

**Dr. A. B. Dadas, Director**


### Cleanliness in the institute

196 responses



19, Late Prin. V. K. Joag Path, Pune – 411001 Maharashtra, (India)

Tel: 020-26163275, 26160788, 020-26169949 (Director)

  
Director  
Neville Wadia Institute of  
Management Studies & Research  
Pune-411 001.