




Modern Education Society's
Neville Wadia Institute of Management Studies & Research, Pune
(Permanently affiliated to Savitribai Phule Pune University, Accredited by NAAC
Approved by AICTE, recognized under 2 (f) & 12 (b) sections of UGC Act)
Email: director@nevillewadia.com, Website: nwimsr.mespune.org

Dr. A. B. Dadas, Director

TEACHER
FEEDBACK ABOUT
CURRICULUM
2018-19



19, Late Prin. V. K. Joag Path, Pune – 411001 Maharashtra, (India)
Tel: 020-26163275, 26160788, 020-26169949 (Director)


Director
Neville Wadia Institute of
Management Studies & Research
Pune-411 001.

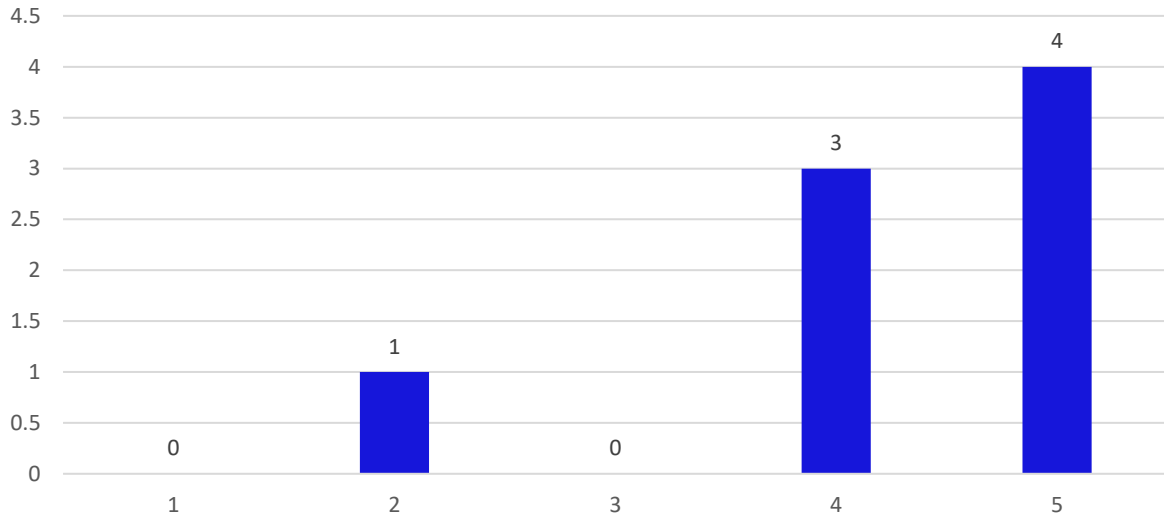


Modern Education Society's
Neville Wadia Institute of Management Studies & Research, Pune
(Permanently affiliated to Savitribai Phule Pune University, Accredited by NAAC
Approved by AICTE, recognized under 2 (f) & 12 (b) sections of UGC Act)
Email: director@nevillewadia.com, Website: nwimsr.mespune.org

Dr. A. B. Dadas, Director

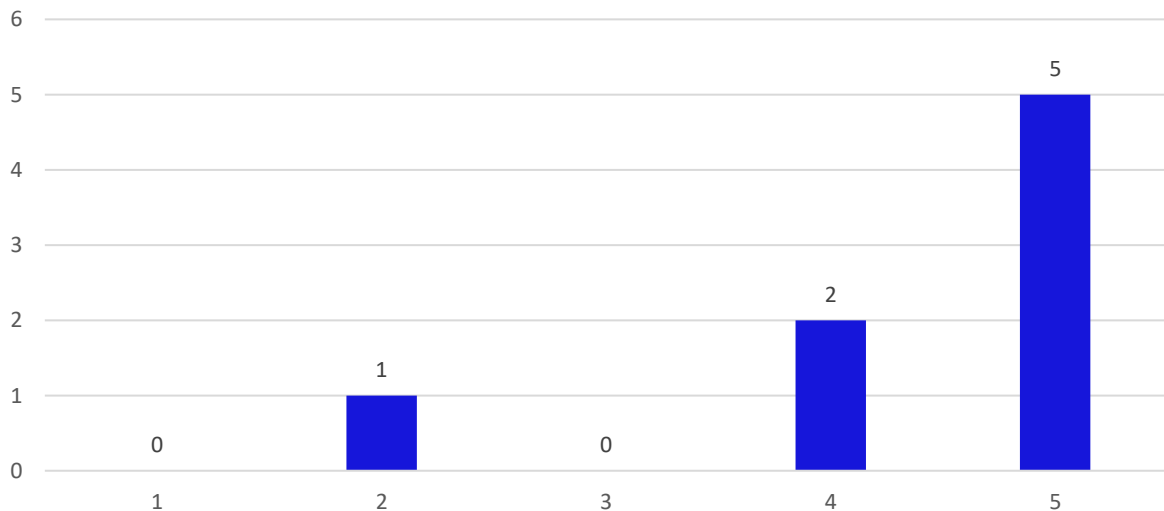
Curriculum is need based with respect to the recent advancements.

8 responses




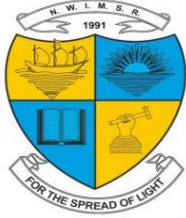
Extent of coverage of topics was satisfactory.

8 responses



19, Late Prin. V. K. Joag Path, Pune – 411001 Maharashtra, (India)
Tel: 020-26163275, 26160788, 020-26169949 (Director)


Director
Neville Wadia Institute of
Management Studies & Research
Pune-411 001.

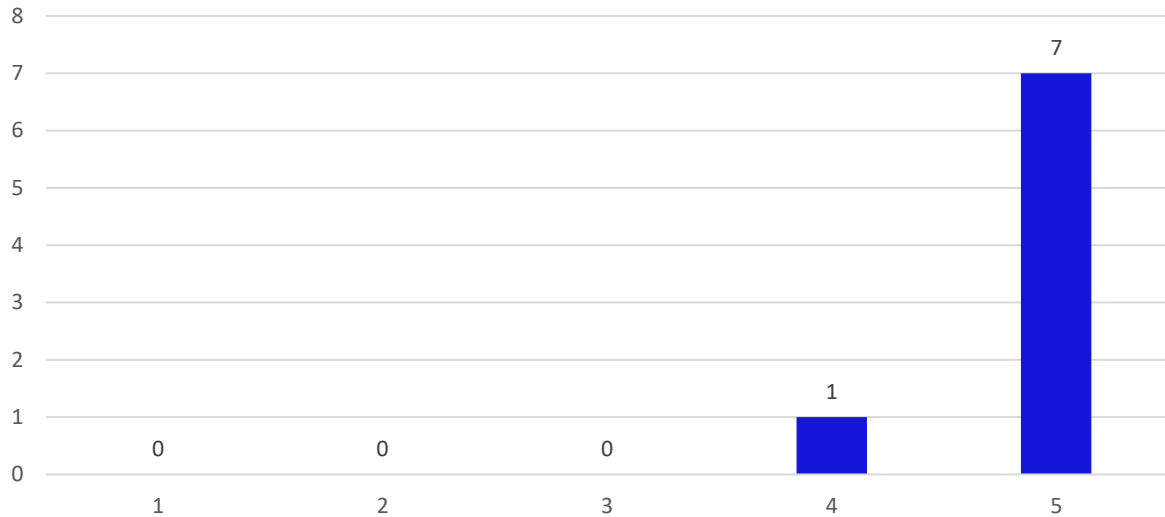


Modern Education Society's
Neville Wadia Institute of Management Studies & Research, Pune
(Permanently affiliated to Savitribai Phule Pune University, Accredited by NAAC
Approved by AICTE, recognized under 2 (f) & 12 (b) sections of UGC Act)
Email: director@nevillewadia.com, Website: nwimsr.mespune.org

Dr. A. B. Dadas, Director

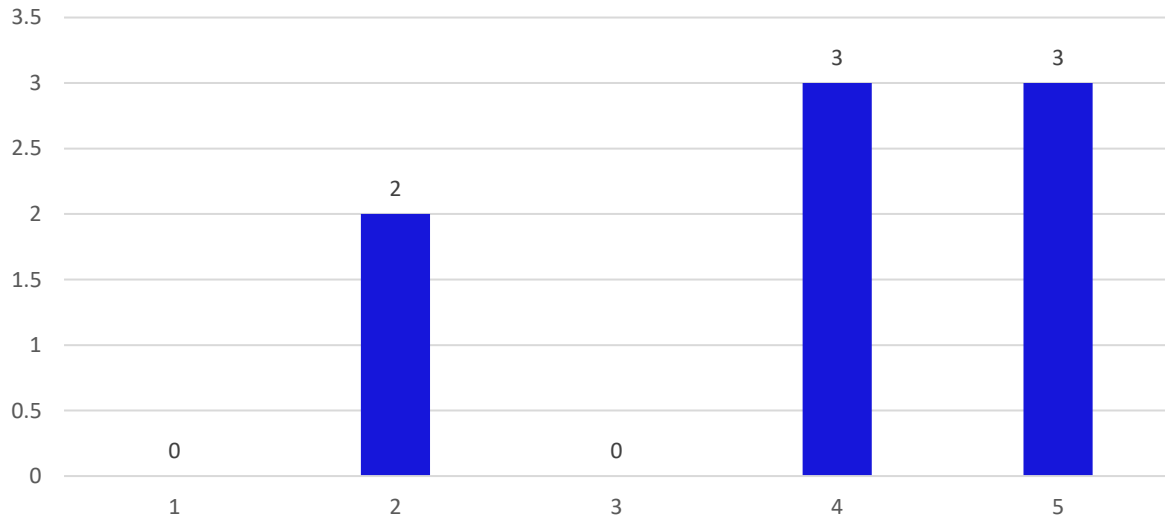
The books prescribed in the curriculum are available in the library.

8 responses




MBA Syllabus is regularly updated by the BOS of the University.

8 responses



19, Late Prin. V. K. Joag Path, Pune – 411001 Maharashtra, (India)
Tel: 020-26163275, 26160788, 020-26169949 (Director)


Director
Neville Wadia Institute of
Management Studies & Research
Pune-411 001.

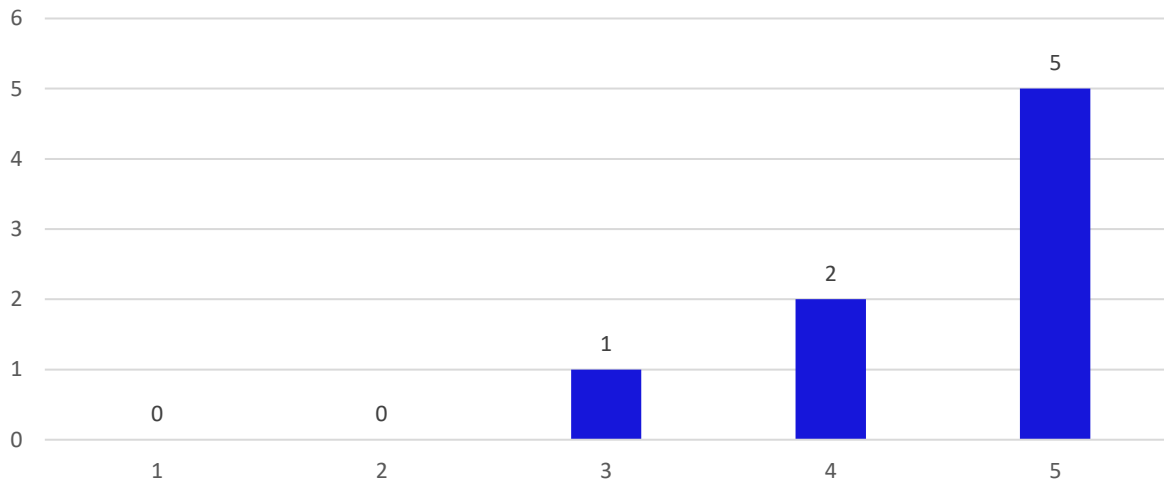


Modern Education Society's
Neville Wadia Institute of Management Studies & Research, Pune
(Permanently affiliated to Savitribai Phule Pune University, Accredited by NAAC
Approved by AICTE, recognized under 2 (f) & 12 (b) sections of UGC Act)
Email: director@nevillewadia.com, Website: nwimsr.mespune.org

Dr. A. B. Dadas, Director

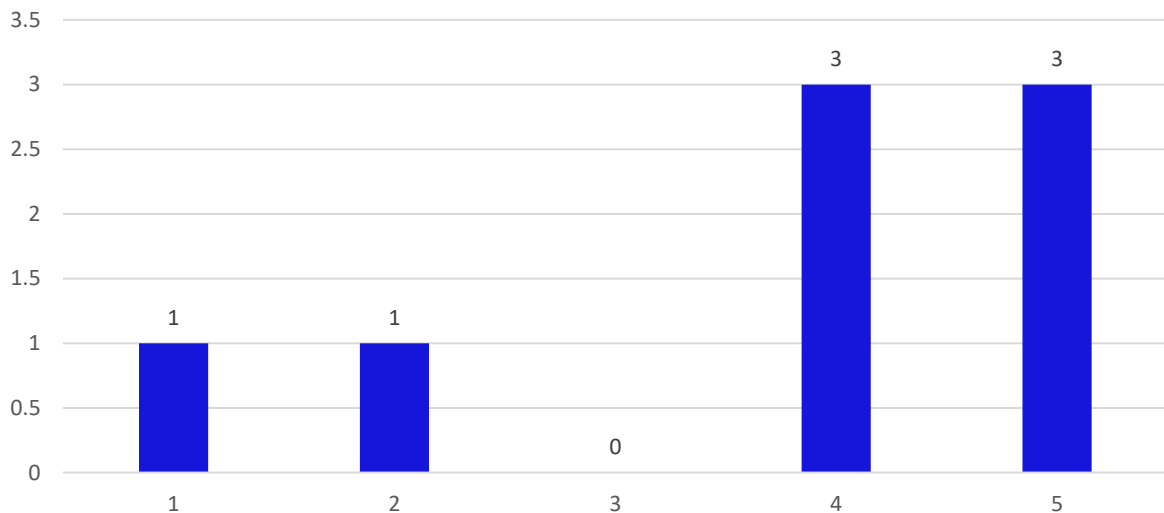
The management provides adequate support for upgrading skills and qualifications of Faculty.

08 responses




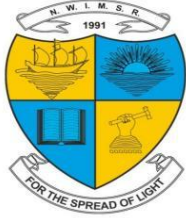
The curriculum has good balance of theory and practical.

08 responses



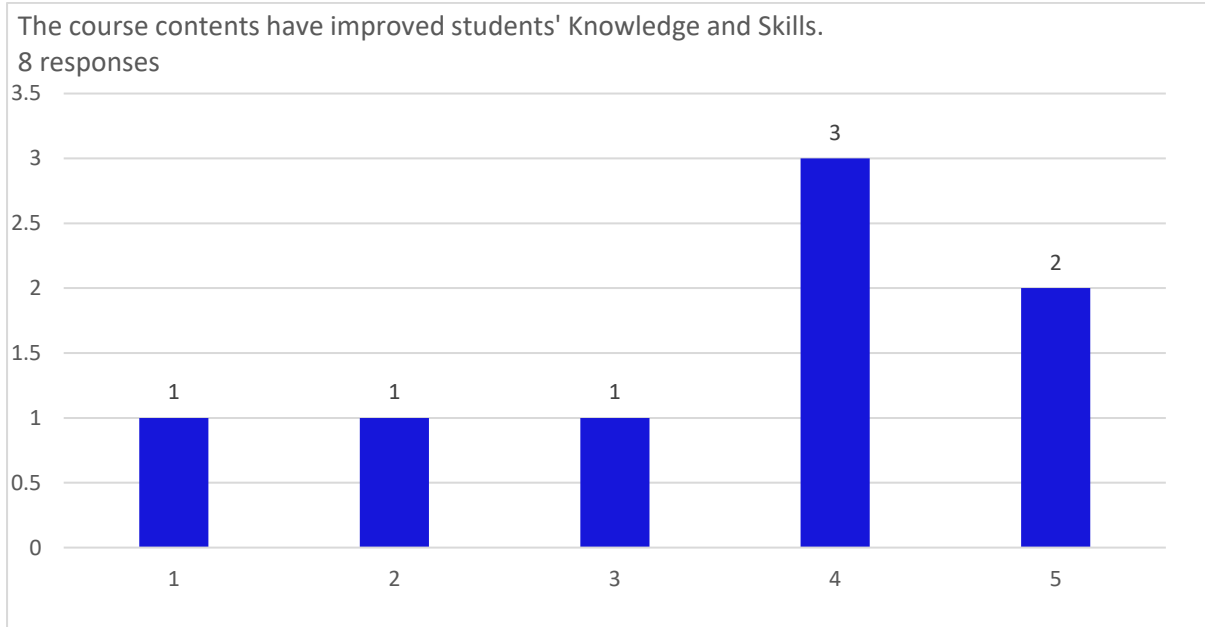
19, Late Prin. V. K. Joag Path, Pune – 411001 Maharashtra, (India)
Tel: 020-26163275, 26160788, 020-26169949 (Director)


Director
Neville Wadia Institute of
Management Studies & Research
Pune-411 001.




Modern Education Society's
Neville Wadia Institute of Management Studies & Research, Pune
*(Permanently affiliated to Savitribai Phule Pune University, Accredited by NAAC
Approved by AICTE, recognized under 2 (f) & 12 (b) sections of UGC Act)*
Email: director@nevillewadia.com, Website: nwimsr.mespune.org

Dr. A. B. Dadas, Director



19, Late Prin. V. K. Joag Path, Pune – 411001 Maharashtra, (India)
Tel: 020-26163275, 26160788, 020-26169949 (Director)


Director
Neville Wadia Institute of
Management Studies & Research
Pune-411 001.