



Modern Education Society's

## Neville Wadia Institute of Management Studies & Research


Permanently affiliated to Savitribai Phule Pune University, Accredited by  
NAAC Approved by AICTE, recognized under 2 (f) & 12 (b) sections of UGC  
Act Email : [director@nevillewadia.com](mailto:director@nevillewadia.com), Website: [www.nevillewadia.com](http://www.nevillewadia.com)

*Dr. A. B. Dadas, Director*

# STUDENT FEEDBACK ABOUT CURRICULUM 2018-19

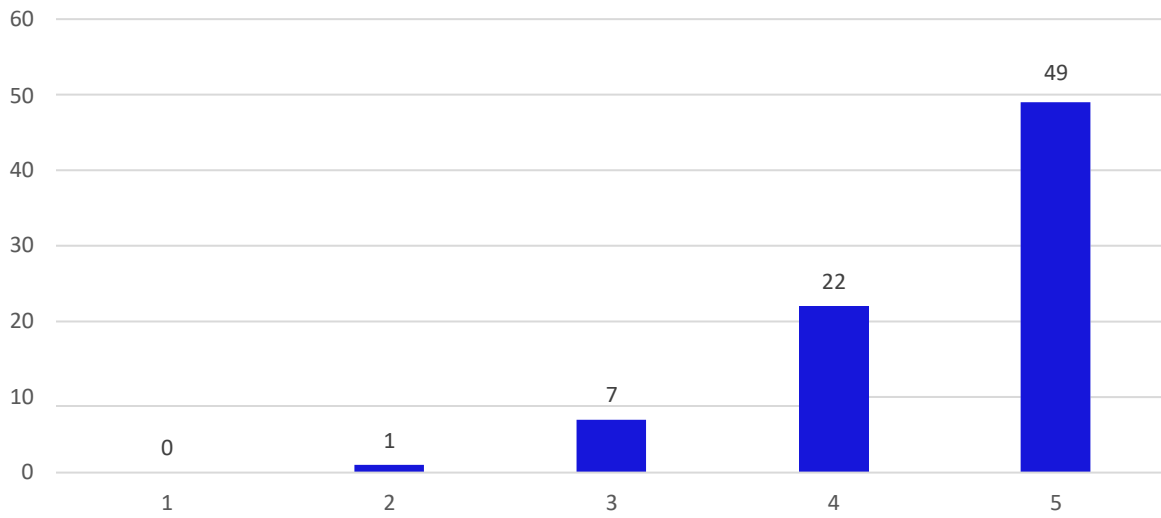


19, Late Prin. V. K. Joag Path, Pune – 411001 Maharashtra, (India)  
Tel: 020-26163275, 26160788, 020-26169949 (Director)

  
Director  
Neville Wadia Institute of  
Management Studies & Research  
Pune-411 001.

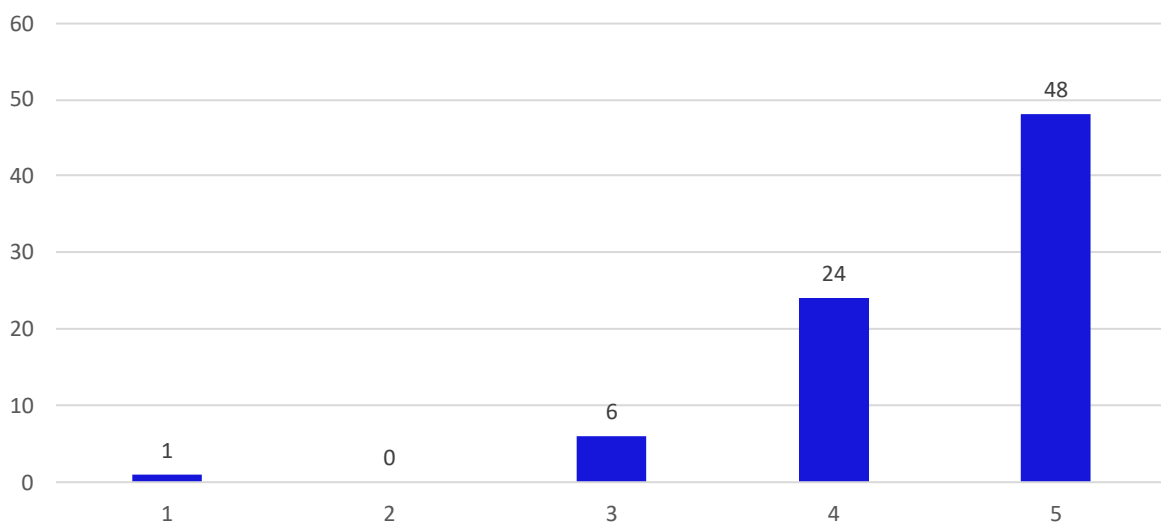
Depth of the Course is appropriate.

79 responses




Extent of coverage of relevant topics is satisfactory.

79 responses



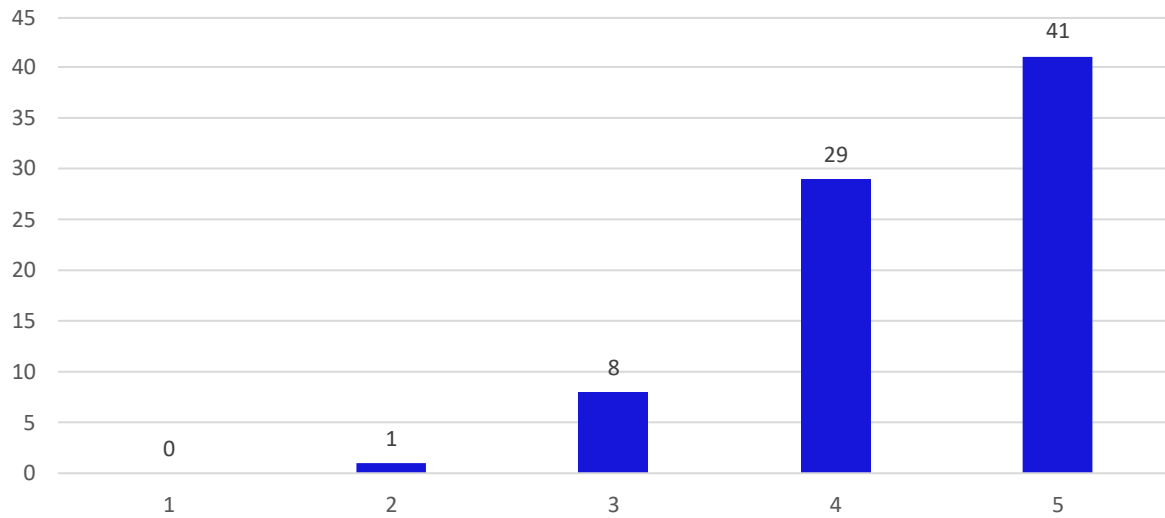
19, Late Prin. V. K. Joag Path, Pune – 411001 Maharashtra, (India)  
Tel: 020-26163275, 26160788, 020-26169949 (Director)



Director  
Neville Wadia Institute of  
Management Studies & Research  
Pune-411 001.

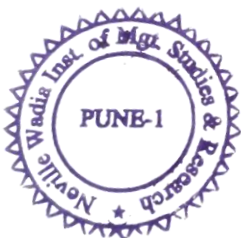
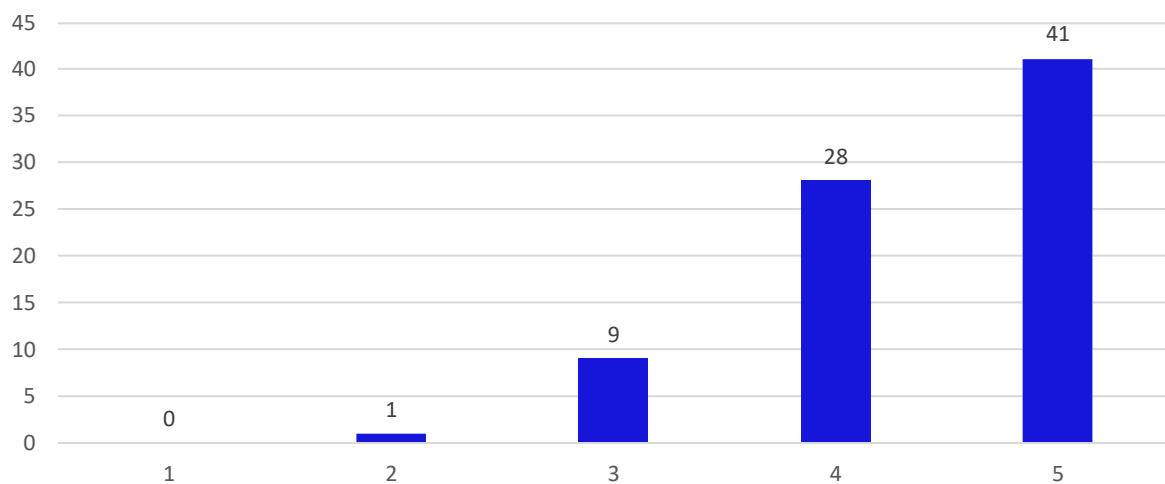
The curriculum is relevant to the real-life situations.

79 responses



Learning value (in terms of knowledge, concepts, analytical abilities and broadening perspective) is satisfactory.

79 responses



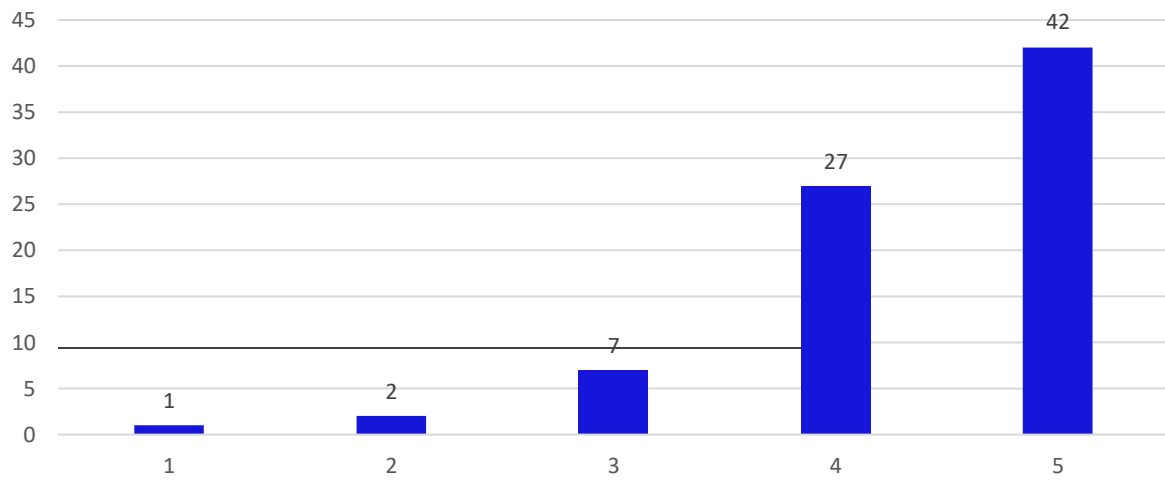
19, Late Prin. V. K. Joag Path, Pune – 411001 Maharashtra, (India)  
Tel: 020-26163275, 26160788, 020-26169949 (Director)



Director  
Neville Wadia Institute of  
Management Studies & Research  
Pune-411 001.

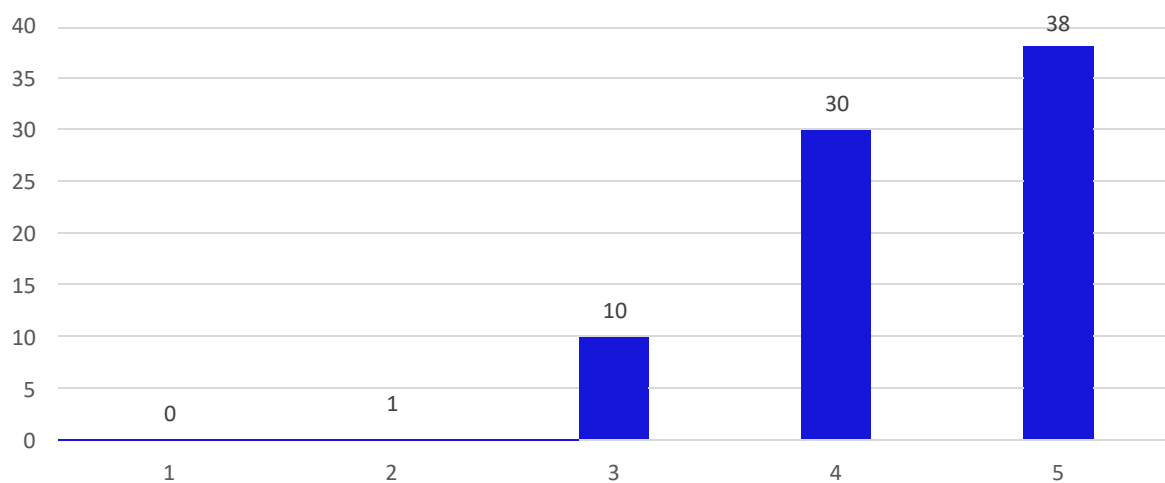
The curriculum brings awareness about challenges faced by corporate world.

79 responses



The elements in the curriculum helps to develop me as a management professional.

79 responses



19, Late Prin. V. K. Joag Path, Pune – 411001 Maharashtra, (India)  
Tel: 020-26163275, 26160788, 020-26169949 (Director)



Director  
Neville Wadia Institute of  
Management Studies & Research  
Pune-411 001.